



LH310 Series Edge DVR

Quick Setup Guide

Network Ready, H.264 High Performance Digital Video Surveillance Recorder

PACKAGE CONTENTS:

- 1 x EDGE DIGITAL VIDEO RECORDER WITH PRE-INSTALLED HDD*
- 1 x USB MOUSE
- 1 x POWER ADAPTOR
- 1 x DVI/VGA ADAPTOR (8/16-channel only)
- 1 x FLEX IR EXTENDER
- 1 x REMOTE CONTROL**
- 1 x ETHERNET CABLE
- 1 x MOUNTING KIT
- 1 x INSTRUCTION MANUAL
- 1 x QUICK START GUIDE
- 1 x DOCUMENTATION CD

Easily Connects
to a Monitor with a
DVI/VGA Input.
HDMI Compatible*



DVI TO HDMI CONVERTER CABLE REQUIRED. (NOT INCLUDED)

ATTENTION:

- * Channel/ Port configuration and HDD (hard disk drive) capacity may vary by model. Check your package for specific content information.
- **Remote control included with the system may vary depending on model.
- Monitor and Cameras are not included.
- Broadband Router and Computer are required for local and remote monitoring (not included).
- For detailed setup and software information, please refer to your printed User's manual (included).

It's all on the Web
www.lorexcctv.com

For detailed setup information, please refer to your included User's Manual. For additional information, please visit our website www.lorexcctv.com



Information in this document is subject to change without notice. As our products are subject to continuous improvement, Lorex Technology INC. and our subsidiaries reserve the right to modify product design, specifications and prices, without notice and without incurring any obligation. E&OE © 2009 LOREX. All rights reserved.

BASIC SETUP

STEP 1

BASIC INSTALLATION GUIDE

Time: 20 Minutes | Hand Tools | Skills - Easy

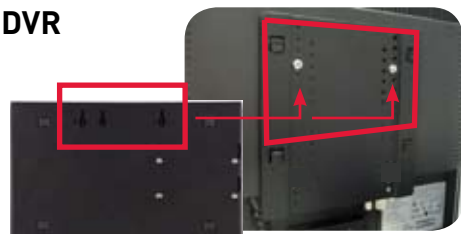


The LH310 Series Edge DVR is designed to mount securely to the back of LCD monitors with a VESA mount. However, if desired, you can also leave the DVR in a standard horizontal position.

ATTENTION: YOU CAN ONLY MOUNT THE EDGE DVR TO AN LCD MONITOR WITH A VESA MOUNT AND AN INDEPENDENT STAND.

Mounting the Edge DVR

- 1 Screw the provided mounting screws into the two top holes in the rear panel of your LCD monitor. Make sure the screws are only 3/4 of the way in; this will allow sufficient clearance to hang the Edge DVR.

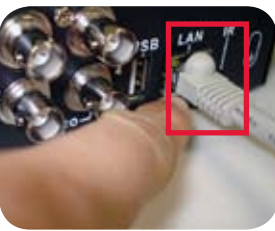


- 2 Carefully place the Edge DVR (front panel facing up) over the screws and slide down into place.



Connecting the Ethernet Cable

- 3 Connect one end of the Ethernet cable (for remote monitoring) to one of the router's (not included) LAN ports and the other end to the DVR's Network Port.



Connecting the USB Mouse

- 4 Connect a USB mouse to the USB port on the rear panel of the Edge DVR.



Connecting the Cameras (not included)

- 5 Connect BNC cameras to the BNC ports on the rear panel.



BASIC SETUP

STEP 1

CONTINUED

BASIC INSTALLATION GUIDE

Time: 20 Minutes | Hand Tools | Skills - Easy



Connecting a Monitor (not included)

- 6 Connect the VGA / DVI cable (not included) from your LCD monitor to the VGA port (4 CH) / DVI port (8/16 CH only) on the rear panel of the system.



Connecting the Flex-IR Extender

- 7 Connect the Flex-IR extender to the port on the rear panel of the DVR. Position the Flex-IR extender near the front of your monitor, or where it will receive a clear signal from the remote control.



Powering ON the Edge DVR

- 8 Connect the power cable to the DC 12V port on the rear panel of the DVR. At startup, the system performs a basic system check and runs an initial loading sequence. After a few moments, the system loads a live display view.



***NOTE: Make sure all cameras and cables are properly connected prior to powering on the system.**

Managing Passwords

- 9 The system has the following user authorities:
 - ID 1—normal user: Has full control of the system, but cannot change passwords or enable/disable password checking. Default password: 1111
 - ID 2—administrator: Has full control of the system but can change both administrator and user passwords and enable/disable password checking. Default password: 2222By default, when you first startup your system, you will be logged in as ID 2.

Setting the Date & Time

- 10 1. Click to open the Main Menu.
2. Click to open the Setup menu.
3. Click **Date/Time Setup** and configure the following options:
 - **Date Mode:** Use the scroll wheel to select Y/M/D, D/M/Y, or M/Y/D.
 - **Date:** Use the scroll wheel to manually enter the date.
 - **Time:** Use the scroll wheel to manually enter the time.
4. Click Exit/Update. The new date and time are saved; the system returns to the Setup menu.
5. Right click to exit until all menus are closed. The date and time will appear on the bottom-left corner of the screen.

NAVIGATION AND CONTROLS

STEP 2

BASIC INSTALLATION GUIDE

Time: 20 Minutes | Skills - Easy



Using the Main Menu

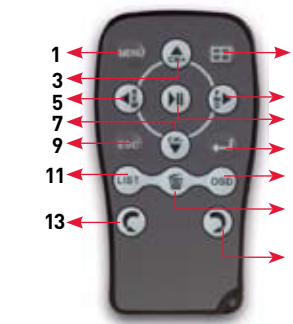
- 1 Press the button on the remote control to open the Main Menu.
1. Camera, 2. Setup, 3. Record, 4. Alarm
5. Backup, 6. LAN



TIP: When navigating menus: Left mouse button: Click to select menu options. Scroll-Wheel: Scroll up/down to change values for selected options.

Using the Remote Control**

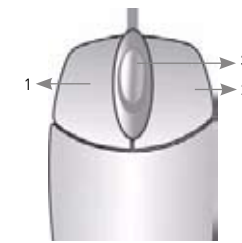
- 2 1. **MENU:** Opens the system main menu.
2. : Press to open the Split-Screen Selection menu (8 / 16-channel only). From full-screen single channel view, changes display view to Quad split-screen (4-channel model only).
3. **▲/CH+:** Move cursor in menus up; Channel Up.
4. **►/FWD:** Move cursor in menus right; during playback, increase forward playback speed (5X, 15X, 60X).
5. **◀/REW:** Move cursor in menus left; during playback, increase reverse playback speed (5X, 15X, 60X).
6. **▶/II:** Start/pause forward playback.
7. **▼/CH-:** Move cursor in menus down; Channel down.
8. : Confirm menu selections.
9. **ESC:** Go back / exit menus.
10. **OSD:** Show/hide the on-screen display.
11. **LIST:** Open the Event List menu.
12. : While in Event List menu, press to delete a selected event (no confirm or undo).
13. : Decrease value of selected menu option.
14. : Increase value of selected menu option.



****Remote control included with the system may vary depending on model.**

Using a Mouse

- 3 • Left-Button: Click to select a menu option; while in Quad mode (Live View or Playback), click on channels 1, 2, 3, or 4 to view the selected channel in full-screen.
• Right-Button: Click to return to previous menu; exit menus/modes.
• Scroll-Wheel: Scroll up/down to change values in selected menu options; position markers in playback bar.



Congratulations! You have completed STEP 1 & 2 successfully. Your DVR is now ready to use. Refer to the owner's manual to learn how to record, playback, use the search features and all other features available with this DVR.

SET-UP LOCAL VIEWING ON YOUR PC

STEP 3

LOCAL VIEWING INSTALLATION GUIDE

Time: 30 Minutes | Hardware PC/Router | Skills - Intermediate



This step relates to remote viewing over the LAN (local area network) by using a pc located on the same network as that of the DVR.

Retrieve the DVR Information

NOTE: It might be necessary to change the IP address of the DVR to match the IP address of your local network. For more details, please see Appendix B: Setting up Local and Remote Viewing in the LH310 Instruction Manual.

- 1 1. Press the button twice on the remote control.
OR
1. From the main Menu, click , and then click Information. Your IP address and MAC address are under LAN.
2. To exit, right-click or click until you return to the main screen.

Record the IP and MAC Addresses in the section below:

IP ADDRESS : ____ . ____ . ____ . ____

MAC ADDRESS : ____ : ____ : ____ : ____ : ____ : ____
(Required for DDNS registration)

Getting Started (on your local computer):

- 2 Before using DVR Netviewer, you must configure settings in **QuickTime® (4-channel only)**. QuickTime is required for DVR Netviewer to function properly. If not already installed on your system, download QuickTime from www.apple.com/quicktime

Configuring QuickTime (on your local computer):

- 3 You must configure QuickTime prior to using DVR Netviewer for the first time **(4-channel only)**.
To configure QuickTime:
1. With QuickTime installed on your system, open **QuickTime** by double-clicking the QuickTime icon on your desktop or selecting **Start→Programs→QuickTime→QuickTime Player**.
2. From the QuickTime Player main window, select **Edit→Preferences→QuickTime Preferences**.
3. From the QuickTime Preferences window, click the **Advanced tab**.
4. Under **Transport Setup**, select **Custom**. The Streaming Transport window opens.
5. Under **Transport Protocol**, select **HTTP**.
6. Under **Port ID**, select **80** and click **OK**. The Streaming Transport window closes.
7. From the **Preferences window**, click **Apply**, and then click **OK**.

SET-UP LOCAL VIEWING ON YOUR PC

LOCAL VIEWING INSTALLATION GUIDE

STEP 3

CONTINUED

Time: 30 Minutes

Hardware

PC/Router

Skills - Intermediate



SET-UP INTERNET REMOTE SECURITY MONITORING

REMOTE VIEWING INSTALLATION GUIDE

STEP 4

Time: 60 Minutes

Hardware

PC/Router

Skills - Advanced



SET-UP INTERNET REMOTE SECURITY MONITORING

REMOTE VIEWING INSTALLATION GUIDE

STEP 4

CONTINUED

Time: 60 Minutes

Hardware

PC/Router

Skills - Advanced



SET-UP INTERNET REMOTE SECURITY MONITORING

REMOTE VIEWING INSTALLATION GUIDE

STEP 4

CONTINUED

Time: 60 Minutes

Hardware

PC/Router

Skills - Advanced



SET-UP INTERNET REMOTE SECURITY MONITORING

REMOTE VIEWING INSTALLATION GUIDE

STEP 4

CONTINUED

Time: 60 Minutes

Hardware

PC/Router

Skills - Advanced



Logging In to DVR Netviewer (on your local computer):

1. Launch **Internet Explorer**.
2. In the address bar, enter the **IP address of your DVR** (recorded in Step 3-1).
3. In the ID and password fields, enter your network user ID and password and click **LOGIN**.

NOTE: Once you have added and connected to a DVR, you can monitor and control the system in real time.



4. **4 Channel DVR:** If necessary, select your MIME type configuration. DVR Netviewer uses Quicktime for live video streaming. Select **No** to maintain your MIME type association with your default media Player. If you select Yes, the MIME types will be associated with QuickTime. Check the box to avoid seeing the MIME type prompt in the future.

Login using your LAN user ID and password (by default, ID 9; password 3333).



5. **8/16 Channel DVR:** You must install the ActiveX® plug-in for DVR Netviewer to function. Click the attention bar at the top of the main page and select **Install ActiveX Control**. DVR Netviewer will reset.
6. Log in with your **LAN** user name and password. From the security window, click **Install**.

Local Live Viewing using DVR Netviewer (on your local computer):

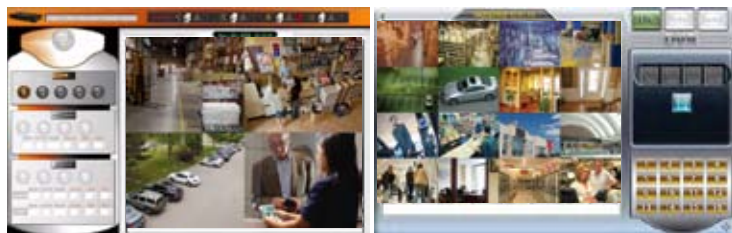
- 5 By default, DVR Netviewer launches in Live Viewing mode.

To use Live Viewing (4 channel DVR):

1. Click **LIVE**.
2. Click **1**, **2**, **3**, **4**, to view individual selected channels in full-screen, or click **1** to view channels in quad split-screen mode.
3. To pause the live image, click **1** in the bottom-left corner of the QuickTime window. Click **1** to resume live streaming.

To use Live Viewing (8/16 channel DVRs):

1. Click **LIVE**.
2. Click **1**, **2**, **3**, **4**, to view in Quad or 16-split.
3. Click the Channel buttons to view channels in full-screen



LOCAL LIVE SITE- 4 CH

LOCAL LIVE SITE- 16 CH

Port Forward your Router:

- 1 Port forward your router first before proceeding with the set-up. You must forward • **80 (HTTP port)**, • **8090 (QuickTime Port - 4 channel only)**

All routers are different. To port forward your router, please refer to your router's user manual.

A router configuration guide featuring the most commonly used routers in the market is available on www.lorexccctv.com/support in the Consumer's Guide Section. An example of a port forwarding screen is shown for illustration purposes.

EXAMPLE		Port Range				
Application	Start	End	Protocol	IP Address	Enable	
System	8090	to	8090	Both	192.168.1.12	<input checked="" type="checkbox"/>
System	80	to	80	Both	192.168.1.12	<input checked="" type="checkbox"/>

DDNS (Dynamic Domain Name System) Set-up:

- 2 Open your web browser (Internet Explorer by default) and enter <http://www.lorexddns.net> in the address bar.



Create Account:

- 3 Open your web browser (Internet Explorer by default) and enter <http://www.lorexddns.net> in the address bar.



Complete New Account Information:



1. FOR PRODUCT LICENSE select the **LH310 Series** option from the drop down menu.
2. FOR PRODUCT CODE enter the Monitor's MAC address (recorded in step 3, section 1).
3. FOR URL REQUEST enter a unique URL name (e.g. tomsmith). Note: URL name should not be more than 15 characters.

Registration Email:

- 5 An automated **REGISTRATION CONFIRMATION EMAIL** will be sent to your email. Print and Save this confirmation. You will need this information to access your System remotely.

Service Provider: dns1.lorexddns.net
Domain Name: tomsmitth.lorexddns.net
User ID: tomsmith
Password: (your password)

Enter DDNS Set-up on your DVR:



ATTENTION: You **MUST** enter your DDNS information **LOCALLY** before attempting remote access.

1. Open Internet Explorer (version 6 or above) and enter the **IP address** of your DVR in the address bar (i.e. 192.168.xxx.89). DVR Netviewer opens.
2. Login using your **LAN user ID** and **password** (by default, ID 9; password 3333).

3. Click **Setup**. The Setup menu opens.

4. Under **Network**, click **DDNS**.

5. In the corresponding text fields, enter your **DDNS username** and **password**.

NOTE: Obtain this information from the confirmation email after registering for the free Lorex DDNS service.

6. Under DDNS Domain Name, enter only the first portion of your DDNS domain from the confirmation email. For example, if your domain name is tomsmith@lorexddns.net, you only need to enter **tomsmitth** in the text field.
7. Click **Submit** to save your settings or click **Cancel** to exit without saving.

NOTE: Once you have saved your DDNS settings, you must reset your system in order for the changes to take effect. Disconnect and reconnect the power cable from the rear panel to reset. Please allow 10-15 minutes for the DDNS servers to update with your new DDNS address.

Adding a DVR (on your remote computer):

NOTE: Make sure you have connected your DVR to your network prior to using DVR Netviewer.

Getting Started (on your remote computer):

- 4 **Channel DVR:** Before using DVR Netviewer, you must configure settings in QuickTime. QuickTime is required for DVR Netviewer to function properly. If not already installed on your system, download QuickTime from www.apple.com/quicktime

Configuring QuickTime (on your remote computer):

- 8 **4 Channel DVR:** You must configure QuickTime prior to using DVR Netviewer for the first time.

To configure QuickTime:

1. With QuickTime installed on your system, launch **QuickTime** by double-clicking the QuickTime icon on your desktop or selecting **Start→Programs→QuickTime →QuickTime Player**.

2. From the QuickTime Player main window, select **Edit→**

Preferences→QuickTime Preferences.

3. From the QuickTime Preferences window, click the **Advanced tab**.

4. Under **Transport Setup**, select **Custom**. The Streaming Transport window opens.

5. Under **Transport Protocol**, select **HTTP**.

6. Under **Port ID**, select **80** and click **OK**. The Streaming Transport window closes.

7. From the **Preferences window**, click **Apply**, and then click **OK**.

NOTE: For added security, we highly recommend changing HTTP port 80 on the system to any desired port -- the port must not be blocked by your Internet service provider. For more details on changing ports, please see Appendix C: Changing ports on Your System in the LH310 Instruction Manual.

Logging In to DVR Netviewer (on your remote computer):

- 9 1. Launch **Internet Explorer**.
2. In the address bar, enter the **DDNS DOMAIN NAME** (e.g. tomsmitth.lorexddns.net) from the Registration Email sent to you.
3. In the ID and password fields, enter your network user ID and password and click **LOGIN**.

NOTE: Once you have added and connected to a DVR, you can monitor and control the system in real time.



4. **4 Channel DVR:** If necessary, select your MIME type configuration. DVR Netviewer uses Quicktime for live video streaming. Select **No** to maintain your MIME type association with your default media Player. If you select Yes, the MIME types will be associated with QuickTime. Check the box to avoid seeing the MIME type prompt in the future.



5. **8/16 Channel DVR:** You must install the ActiveX® plug-in for DVR Netviewer to function. Click the attention bar at the top of the main page and select **Install ActiveX Control**. DVR Netviewer will reset.
6. Log in with your **LAN** user name and password. From the security window, click **Install**.

Remote Live Viewing using DVR Netviewer:

- 6 By default, DVR Netviewer launches in Live Viewing mode.

To use Live Viewing (4 channel DVR):

1. Click **LIVE**.
2. Click **1**, **2**, **3**, **4**, to view individual selected channels in full-screen, or click **1** to view channels in quad split-screen mode.
3. To pause the live image, click **1** in the bottom-left corner of the QuickTime window. Click **1** to resume live streaming.

To use Live Viewing (8/16 channel DVRs):

1. Click **LIVE**.
2. Click **1**, **2**, **3**, **4**, to view in Quad or 16-split.
3. Click the Channel buttons to view channels in full-screen



REMOTE LIVE SITE- 4 CH

REMOTE LIVE SITE- 16 CH

Congratulations! You have completed Step 3 & 4 successfully. You can now view, playback images on your Local Computer via LAN (local area network) and Remotely control the system on your Remote computer over the Internet (Wide Area Network).

It's all on the Web
www.lorexccctv.com

For detailed setup information, please refer to your included User's Manual. For additional information, please visit our website www.lorexccctv.com

