

REMOTE SURVEILLANCE CAMERA

WIRELESS, NETWORK READY,
DAY/NIGHT, EASY CONNECT

Instruction Manual

English Version 1.0



**MODEL:
LNE3003**





www.lorexctv.com

Thank you for purchasing the LNE3003 Remote Surveillance Camera. Lorex is committed to providing our customers with a high quality, reliable security product.

To learn more about the Wireless Easy Connect Network Camera, and to learn about our complete range of accessory products, including manuals, software updates, and firmware, please visit our website at:

<http://www.lorexcctv.com>

	CAUTION RISK OF ELECTRIC SHOCK DO NOT OPEN	
CAUTION: TO REDUCE THE RISK OF ELECTRIC SHOCK DO NOT REMOVE COVER (OR BACK). NO USER SERVICABLE PARTS INSIDE. REFER SERVICING TO QUALIFIED SERVICE PERSONNEL.		



The lightning flash with arrowhead symbol, within an equilateral triangle, is intended to alert the user to the presence of uninsulated "dangerous voltage" within the products' enclosure that may be of sufficient magnitude to constitute a risk of electric shock



The exclamation point within an equilateral triangle is intended to alert the user to the presence of important operating and maintenance (servicing) instructions in the literature accompanying the appliance.

WARNING: TO PREVENT FIRE OR SHOCK HAZARD, DO NOT EXPOSE THIS UNIT TO RAIN OR MOISTURE.

CAUTION: TO PREVENT ELECTRIC SHOCK, MATCH WIDE BLADE OF THE PLUG TO THE WIDE SLOT AND FULLY INSERT.

*iPhone™, iPod touch™, Yoics™, and MSN™ are registered trademarks of their respective companies, registered in the United States and other countries.

iPhone™ and iPod touch™ are not included in this package.

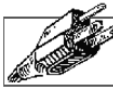
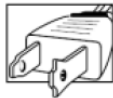
Important Safeguards

In addition to the careful attention devoted to quality standards in the manufacture process of your video product, safety is a major factor in the design of every instrument. However, safety is your responsibility too. This sheet lists important information that will help to assure your enjoyment and proper use of the video product and accessory equipment. Please read them carefully before operating and using your video product.

Installation

1. **Read and Follow Instructions** - All the safety and operating instructions should be read before the video product is operated. Follow all operating instructions.
2. **Retain Instructions** - The safety and operating instructions should be retained for future reference.
3. **Heed Warnings** - Comply with all warnings on the video product and in the operating instructions.
4. **Polarization** - Do not defeat the safety purpose of the polarized or grounding-type plug.

- A polarized plug has two blades with one wider than the other.
- A grounding type plug has two blades and a third grounding prong.
- The wide blade or the third prong is provided for your safety.
- If the provided plug does not fit into your outlet, consult an electrician for replacement of the obsolete outlet



5. **Power Sources** - This video product should be operated only from the type of power source indicated on the marking label. If you are not sure of the type of power supply to your location, consult your video dealer or local power company. For video products intended to operate from battery power, or other sources, refer to the operating instructions.
6. **Overloading** - Do not overload wall outlets of extension cords as this can result in the risk of fire or electric shock. Overloaded AC outlets, extension cords, frayed power cords, damaged or cracked wire insulation, and broken plugs are dangerous. They may result in a shock or fire hazard. Periodically examine the cord, and if its appearance indicates damage or deteriorated insulation, have it replaced by your service technician.
7. **Power-Cord Protection** - Power supply cords should be routed so that they are not likely to be walked on or pinched by items placed upon or against them, paying particular attention to cords at plugs, convenience receptacles, and the point where they exit from the video product.

8. **Ventilation** - Slots and openings in the case are provided for ventilation to ensure reliable operation of the video product and to protect it from overheating. These openings must not be blocked or covered. The openings should never be blocked by placing the video equipment on a bed, sofa, rug, or other similar surface. This video product should never be placed near or over a radiator or heat register. This video product should not be placed in a built-in installation such as a bookcase or rack unless proper ventilation is provided or the video product manufacturer's instructions have been followed.

9. **Attachments** - Do not use attachments unless recommended by the video product manufacturer as they may cause a hazard.

10. **Water and Moisture** - Do not use this video product near water. For example, near a bath tub, wash bowl, kitchen sink or laundry tub, in a wet basement, near a swimming pool and the like.

Caution: Maintain electrical safety. Power line operated equipment or accessories connected to this unit should bear the UL listing mark of CSA certification mark on the accessory itself and should not be modified so as to defeat the safety features. This will help avoid any potential hazard from electrical shock or fire. If in doubt, contact qualified service personnel.

11. **Accessories** - Do not place this video equipment on an unstable cart, stand, tripod, or table.

The video equipment may fall, causing serious damage to the video product. Use this video product only with a cart, stand, tripod, bracket, or table recommended by the manufacturer or sold with the video product.



Any mounting of the product should follow the manufacturer's instructions and use a mounting accessory recommended by the manufacturer.

Service

13. **Servicing** - Do not attempt to service this video equipment yourself as opening or removing covers may expose you to dangerous voltage or other hazards. Refer all servicing to qualified service personnel.
14. **Conditions Requiring Service** - Unplug this video product from the wall outlet and refer servicing to qualified service personnel under the following conditions.
 - A. When the power supply cord or plug is damaged.
 - B. If liquid has been spilled or objects have fallen into the video product.
 - C. If the video product has been exposed to rain or water.
 - D. If the video product does not operate normally by following the operating instructions. Adjust only those controls that are covered by the operating instructions. Improper adjustment of other controls may result in damage and will often require extensive work by a qualified technician to restore the video product to its normal operation.
 - E. If the video product has been dropped or the cabinet has been damaged.
 - F. When the video product exhibits a distinct change in performance. This indicates a need for service.
15. **Replacement Parts** - When replacement parts are required, have the service technician verify that the replacements used have the same safety characteristics as the original parts. Use of replacements specified by the video product manufacturer can prevent fire, electric shock or other hazards.
16. **Safety Check** - Upon completion of any service or repairs to this video product, ask the service technician to perform safety checks recommended by the manufacturer to determine that the video product is in safe operating condition.
17. **Wall or Ceiling Mounting** - The cameras provided with this system should be mounted to a wall or ceiling only as instructed in this guide, using the provided mounting brackets.
18. **Heat** - The product should be situated away from heat sources such as radiators, heat registers, stoves, or other products (including amplifiers) that produce heat.

Use

19. **Cleaning** - Unplug the video product from the wall outlet before cleaning. Do not use liquid cleaners or aerosol cleaners. Use a damp cloth for cleaning.
20. **Product and Cart Combination** - Video and cart combination should be moved with care. Quick stops, excessive force, and uneven surfaces may cause the video product and car combination to overturn.
21. **Object and Liquid Entry** - Never push objects for any kind into this video product through openings as they may touch dangerous voltage points or "short-out" parts that could result in a fire or electric shock. Never spill liquid of any kind on the video product.
22. **Lightning** - For added protection for this video product during a lightning storm, unplug it from the wall outlet. This will prevent damage to the video product due to lightning and power line surges. The manufacturer's instructions and use a mounting accessory recommended by the manufacturer.

General Precautions

1. All warnings and instructions of this manual should be followed.
2. Remove the plug from the outlet before cleaning. Do not use liquid aerosol detergents. Use a water dampened cloth for cleaning.
3. Do not use this unit in humid or wet places.
4. Keep enough space around the unit for ventilation. Slots and openings in the storage cabinet should not be blocked.
5. During lightning storms disconnect the power supply, antenna, and cables to protect the unit from electrical surge.

FCC CLASS B NOTICE

Note:

This equipment has been tested and found to comply with the limits for a Class B digital device, pursuant to Part 15 of the FCC Rules. These limits are designed to provide reasonable protection against harmful interference in a residential installation. This equipment generates, uses, and can radiate radio frequency energy and, if not in-stalled and used in accordance with the instruction, may cause harmful interference to radio communications.

However, there is no guarantee that interference will not occur in a particular installation. If this equipment does cause harmful interference to radio or television reception (which can be determined by turning the equipment on and off), the user is encouraged to try to correct the interference by one or more of the following measures:

- Reorient or relocate the receiving antenna
- Increase the separation between the equipment and receiver
- Connect the equipment into an outlet on a circuit different from that to which the receiver is connected
- Consult the dealer or an experienced radio or television technician for assistance

This equipment has been certified and found to comply with the limits regulated by FCC, EMC, and LVD. Therefore, it is designated to provide reasonable protection against interference and will not cause interference with other appliance usage.

However, it is imperative that the user follows the guidelines in this manual to avoid improper usage which may result in damage to the unit, electrical shock and fire hazard injury

In order to improve the feature functions and quality of this product, the specifications are subject to change without notice from time to time.



LOREX TECHNOLOGY INC.

www.lorexcctv.com

LNE3003 Features

Lorex's new Wireless Easy Connect Network Camera (LNE3003) allows you to remotely monitor your home or business through a secure, password protected connection that requires no networking knowledge. Simply connect the camera to a router, run the installation CD and you are on your way to see, hear and protect what matters.

The LNE3003 features high-resolution viewing, 10x digital zoom and two-way audio. MPEG4 compression provides an efficient video stream, allowing users to monitor real-time surveillance from any computer with an Internet connection or by using the Apple iPhone (mobile 3G).

The LNE3003 is PC and Mac compatible, supporting Internet Explorer, Firefox, Opera, Safari, and Google Chrome browsers. It also provides superior low-light performance with night-vision LEDs. Motion events trigger e-mail notifications with JPEG image attachment allowing users to see what happened. The included software gives users the ability to view, record, and playback video.

It really is that easy!

- No Networking Knowledge Required, GUARANTEED!
 - Plug in Camera, Run Discovery CD (DigiConsole included)
 - Connect
- No DDNS/Router Configuration Required
- Wired / Wireless IEEE 802.11b/g (up to 250ft in open space) connectivity for flexible installation
- Remote Easy Connect (Yoics™ and MSN™), no networking knowledge required
- 10x Digital Zoom
- Superior low-light performance with night-vision LEDs
- Supports VGA (640x480) resolution, 30 frames per second (real time)
- Browser support, Internet Explorer, Firefox, Opera, Safari for viewing on PC or Mac
- Supports MPEG4, MJPEG, 3GPP
- MPEG4 enhanced compression for efficient video streaming
- Motion event triggers e-mail notification with JPEG image attachment
- 3GPP mobile support (e.g. iPhone™/compatible)
- Two-way audio via integrated microphone and external speakers.(not included)
- 6 channel surveillance application for real time viewing and recording
- Lorex DDNS included for guaranteed connection
- Secure web management User/Password protection
- Windows Vista™ Compatible

Table of Contents

Getting Started	8
System Requirements.....	9
Additional Requirements	9
About Yoics	9
Camera Connections	10
Basic Setup	11
Network Connections	12
Positioning the camera.....	13
Installation Warnings	13
Camera Stand Installation	13
Night Vision.....	13
Using the Camera	14
Installing DigiConsole	14
Setting up local viewing	16
Setting up Remote Viewing.....	16
Setting up Remote Viewing.....	17
Registering with Yoics™.....	17
Registering your camera.....	18
Remote Viewing using a Web browser	18
Remote Viewing using a Web browser	19
Setting up Wireless Connectivity	20
Remote Viewing from iPhone™ or iPod touch™	22
Additional Information	23
Appendix 1: Camera Specifications	24

Getting Started

The system comes with the following components:



**1 X NETWORK
CAMERA**



1 X POWER ADAPTOR



**1 X WIRELESS
ANTENNA**



**1 X MOUNTING
STAND (3 PIECES)**



**1 X ETHERNET
CABLE**



**1 X QUICK START GUIDE
1 X SOFTWARE/MANUALS CD**

CHECK YOUR PACKAGE TO CONFIRM THAT YOU HAVE RECEIVED THE COMPLETE CAMERA SYSTEM, INCLUDING ALL COMPONENTS SHOWN ABOVE.

System Requirements

For setup and viewing, the LNE3003 Remote Surveillance Camera requires the following:

- PC running Windows Vista / XP
- Internet connection
- Web browser: Internet Explorer 7 or later (with Active X), Mozilla Firefox, Opera (up to version 9.2), Safari, Google Chrome

Additional Requirements

To view your camera from a remote computer (remote viewing using Yoics™), you may need to install the following:

- QuickTime 7 or later: The QuickTime plug-in is required to view streaming video from your camera using Yoics™. Download QuickTime at www.apple.com/quicktime/download
- Quicktime is also required for use with Web browsers other than Internet Explorer, i.e. Firefox, Opera, Safari, and Chrome.

About Yoics

Yoics™ is secure, instant networking made easy. The LNE3003 Remote Surveillance Camera is enabled for easy-connect Yoics™ remote access, letting you connect to your camera anywhere, anytime. Visit www.yoics.com for more information.

Camera Connections



1. **Power port** – Connect AC adaptor to this port and then connect AC adaptor to electrical outlet.
2. **LAN port** – Local Area Network port. Connect one end of the included network cable to this port, and then connect the other end of the network cable to a network router, switch, or active wall port.
3. **Reset** – Using a paper-clip, hold for 10 seconds to reset the camera to its default configuration.
4. **Speaker port** – Connect speakers for listen-in audio.
5. **Wireless antenna** – The antenna can be positioned at 90° and 180° and rotate 360°.

Basic Setup

Make the following connections prior to starting the camera for the first time.

1. Assemble the pedestal

- i. Attach the stand to the base.
- ii. Attach the mounting bracket to the stand.



Figure 1.0 Assemble the pedestal

2. Assemble the camera

- i. Attach the camera to the completed pedestal. Use the thumb screws to secure the camera firmly.
- ii. Attach the wireless antenna to the back of the camera.
- iii. *Optional:* You can permanently mount the stand to a wall or flat surface.



Figure 1.1 Assemble the camera

3. Connect the camera

- i. Connect the included network cable to the LAN port on the bottom of the camera.
- ii. Connect the other end of the network cable to the router, switch, or active wall port of your local network.
- iii. Plug the power adapter into the power port on the bottom of the camera. Plug the other end to an electrical outlet.

Note: Make sure the LED is lit on the front of the camera. If not, check that all cables are properly connected.

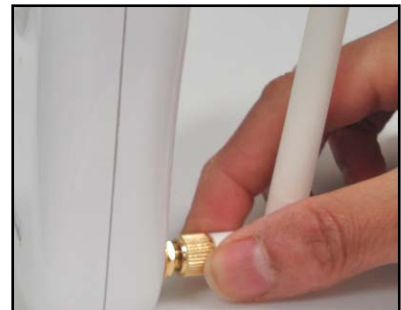


Figure 1.2 Attach the antenna



Figure 1.3 Connect cables

Network Connections

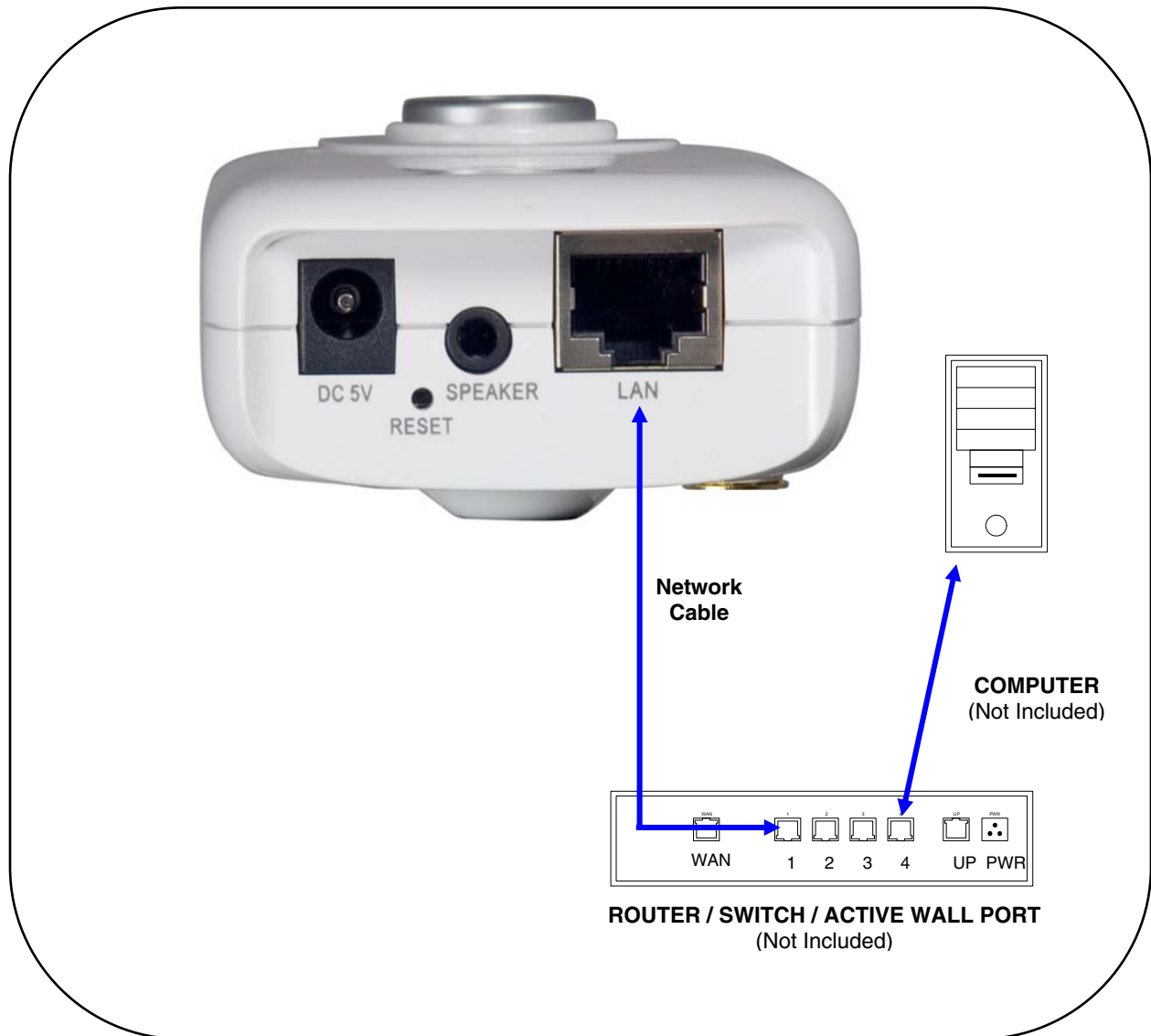


Figure 1.4 Network connectivity diagram

Positioning the camera

Before you install the camera, carefully plan where and how it will be positioned.

Installation Warnings

- Select a location for the camera that provides a clear view of the area you want to monitor, which is free from dust, and is not in line-of-sight to a strong light source or direct sunlight.
- Route the cables so that they are not close to power or telephone lines, transformers, microwave ovens or other electrical equipment.
- Select a location for the camera that has an ambient temperature between 32°F~113°F (0°C~45°C); Humidity 20-80% relative humidity (non-condensing)
- If you plan to install the camera in a location that has conditions not recommended in this manual, consult with a professional installer and consider use of a separate camera cover or housing
- Before starting permanent installation, have another person hold the camera for you while you verify its performance by observing the image on a monitor.

Camera Stand Installation

1. Attach the pedestal to the ceiling, wall or other surface by the base using the provided screws.
2. Attach the camera to the pedestal. Adjust the angle of the camera, and tighten the thumbscrew to set the position

Note: The mounting bracket must be attached to a structural device such as a wall stud or ceiling rafter using the supplied screws.



Night Vision

This camera includes LEDs, which provide the camera with the ability to view images in low light conditions. It is important to use the provided power adaptor when using the camera for prolonged periods in low light conditions.

Using the Camera

With the camera setup and connected, you can now set up local viewing, remote viewing, and wireless connectivity. Before starting the installation, please ensure your computer is connected to the same local network as the camera and has access to the Internet.

It is recommended to install the camera when your computer is wired to the local network. If you are using the wireless connection on your computer, please connect your computer to your wireless router using an Ethernet cable (not included).

Note: The following refers to a Windows Vista installation. Security windows may differ in Windows XP™.

Opening DigiConsole

Note: Prior to using DigiConsole, visit www.lorexctv.com and check for software and firmware updates. Please refer to the DigiConsole & DigiViewer Software Manual for more information on upgrading firmware.

To open DigiConsole:

1. Insert the include DigiConsole software CD into your CD/DVD-ROM drive. DigiConsole automatically launches.

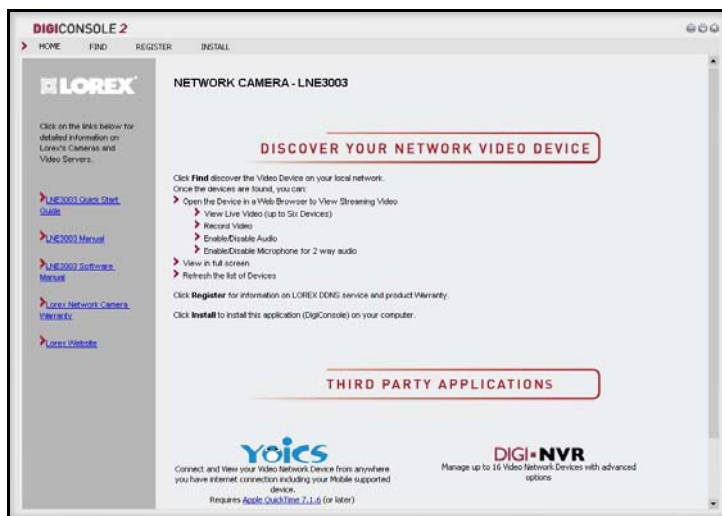


Figure 2.0 DigiConsole main window

2. If a security pop-up window appears, click **Unblock** and **Continue** to allow DigiConsole access to the Internet.

Note: If AutoPlay fails to start, go to Computer (My Computer for Windows XP™ users) and double-click the CD-drive to run the application. Follow step 2.

Note: You do not need to install DigiConsole to view live video from the camera. However, if you wish to record and playback video, you *must* install DigiConsole to your computer. Please refer to the *DigiConsole & DigiViewer Software Manual* for more information on installing DigiConsole.



Figure 2.1 Find your camera from the list of devices

3. Click **Find** to discover Lorex cameras on your network.
4. Double-click the selected camera to launch **DigiViewer** in your default browser.

Finding Your Camera as an UPnP Device (optional)

You can also discover the camera as an UPnP (Universal Plug and Play) device by opening Network in Vista (My Network Places for Windows XP users).

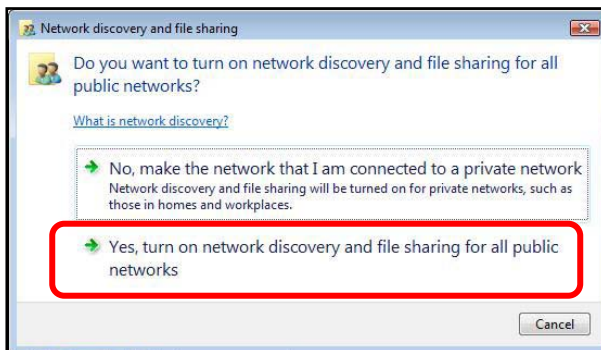
To discover your UPnP device:

1. Turn on Network discovery and file sharing to find your camera as an UPnP device.
2. Double-click the selected camera icon to launch DigiViewer in your default browser.

A.



B.



C.



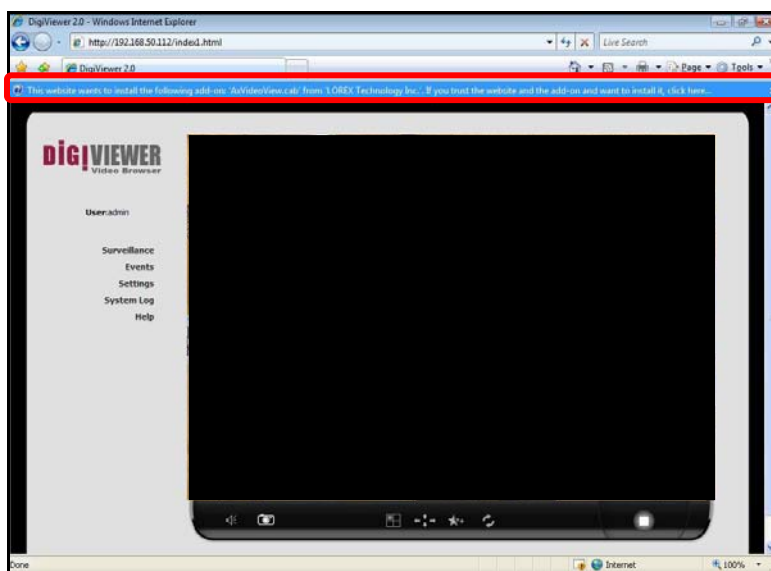
Figure 2.2 Optional UPnP discovery of your camera

Setting up local viewing

With your camera now detected by DigiConsole, you can begin to view live images from your camera on your local network. When using Internet Explorer, you need to install Active X in order for DigiViewer to run properly; other supported browsers will require Quicktime.

To setup local viewing:

1. With DigiViewer open in your default browser, enter **admin** in the username text field and **admin** in the password text field. Your browser prompts you to Install Active X Control.
2. Click the warning bar (it turns from yellow to blue) and select **Install Active X Control**.
3. Click **Unblock** or **Continue** in any subsequent security windows (this is only required for initial setup).
4. Click **Install** to start the installation. DigiViewer resets and live video streams in your browser.



ATTENTION: For security reasons, you should change the default username and password (admin) for the camera. Please refer to the DigiConsole & DigiViewer Software Manual for more information on changing your username and password.

Figure 3.0 Select Install Active X control from the warning bar



Figure 3.1 Windows Security/Firewall

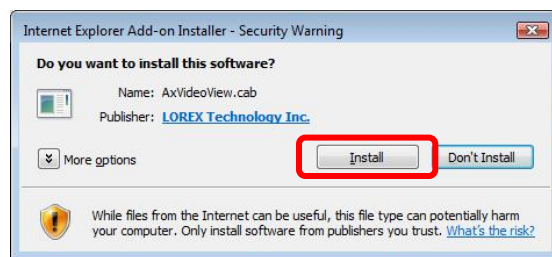


Figure 3.2 Installing Active X

Setting up Yoics™ Remote Viewing

By default, the LNE3003 IP Camera is enabled for Yoics™ easy-connect remote access. Yoics™ remote viewing allows you to easily connect to your camera without needing to configure your network gateway device. Sign-up with Yoics™ to view your camera from a remote location anywhere, anytime.

Note: Apple Quicktime™ is required for Yoics™ Remote Viewing. Download at www.apple.com/quicktime/download

Registering with Yoics™

Sign-up for a free Yoics™ account to access your camera remotely.

To register with Yoics™:

1. From DigiViewer, click Settings and then click **Remote Access**.
2. Under Yoics Instant Networking, click **Register with Yoics**. The Lorex Remote Viewing page opens (www.lorex.yoics.com).

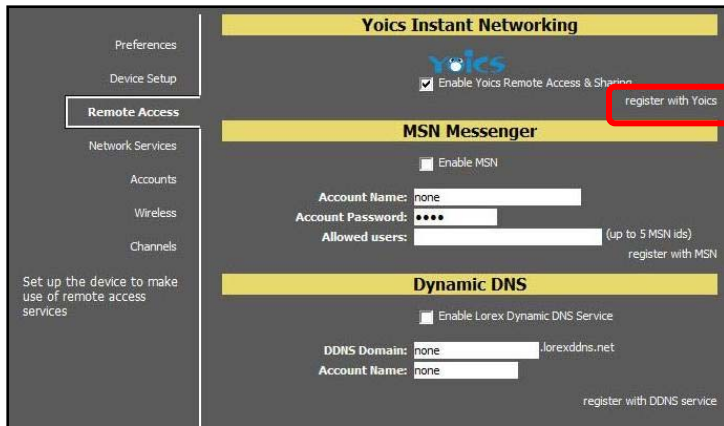


Figure 4.0 DigiViewer Settings – register with Yoics

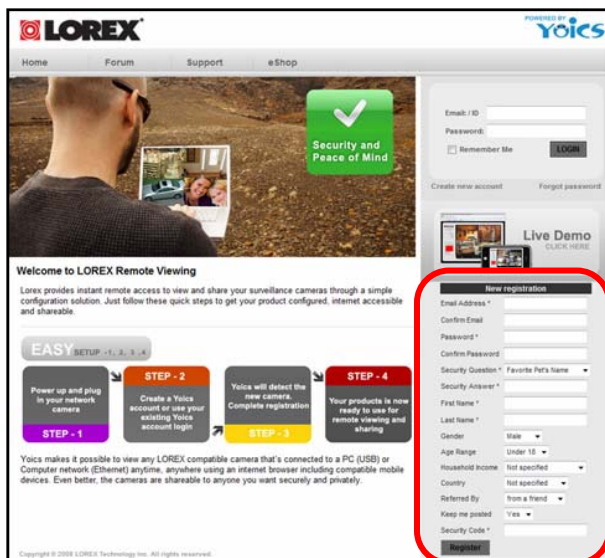


Figure 4.0 Lorex Remote Viewing – powered by Yoics™



3. Enter your personal information in the required fields (marked with *) and click **Register**.

You will be sent an email confirming your registration; use the email address and password you entered when registering to login to lorex.yoics.com

Registering your camera

Once you have created an account with Yoics™, you must register your camera in order to enable Yoics™ remote viewing.

To register you camera:

1. In your browser go to lorex.yoics.com and login using your username and password (from the confirmation email). Click **Yes** in the subsequent security window.
2. From the Lorex pop-up window click **Complete Registration**. The Register New Devices page opens.

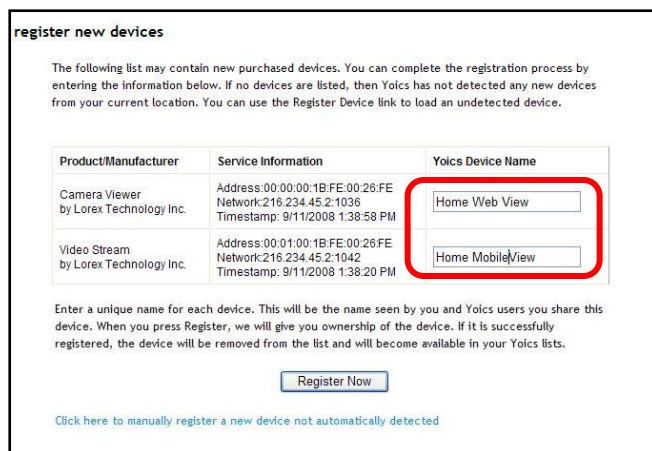


TIP!

If your camera does not appear in the under "My Stuff," press F5 on your keyboard to refresh the page.

Figure 4.1 Complete registration

3. You will be asked to register your camera twice: Video Stream (for using a web browser), and Camera Viewer (when viewing from an iPhone™ or iPod touch™). Enter a name for the camera in the Yoics Device Name text field and click **Register Now**.



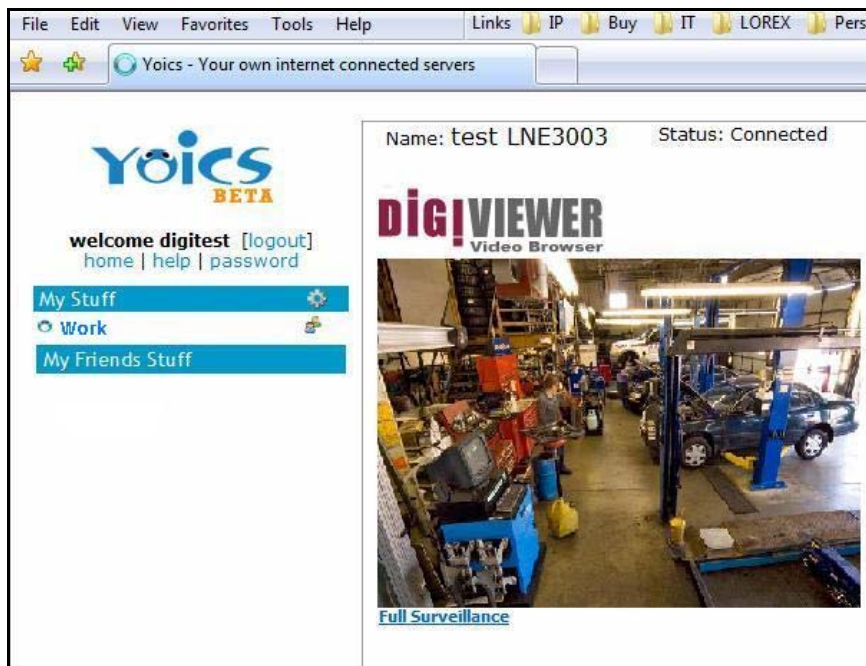
ATTENTION: If you want to use Yoics™ Remote Viewing and port forwarding, you *must first* register your camera with Yoics™. For more information on port forwarding and DDNS setup, please refer to the *DigiConsole & DigiViewer Software Manual*.

Figure 4.2 Reaister your camera for high bandwidth and low bandwidth

Remote Viewing using a Web browser

To access your device remotely from a web browser:

1. In your browser, go to <http://lorex.yoics.com> and log in using your username and password. Click **Yes** in the security pop-up window.
2. Under **My Stuff**, click the camera you want to view.
3. Enter you **username** and **password** (by default, admin) to login to your camera.



ATTENTION: You will be able to view live video for 5~10 minutes then the connection will drop. To refresh the connection, click the camera icon again.

Figure 5.0 Remote viewing in your Web browser

Note: You may need to install Quicktime for the Yoics site. If you have not installed the QuickTime plug-in, your browser will prompt you to do so now (www.apple.com/quicktime/download).

Note: If you have an external (WAN) static IP address or you have registered with the free LOREX DDNS service, you can configure your router to port-forward the incoming Internet connections to the camera. Use the static IP address or your customized lorexddns.net URL in the address field of your browser to access your camera. Yoics registration is not required when using this option. *Please refer to the DigiConsole & DigiViewer Software Manual for more information on DDNS setup and port forwarding.*

Setting up Wireless Connectivity

With initial setup of the camera complete, you can configure settings in DigiViewer to employ a wireless network connection.

To setup wireless connectivity:

1. From DigiViewer, click Settings, and then click **Wireless**. DigiViewer automatically scans for any wireless networks.
2. If not already enabled, select **Enabled** from the Wireless Mode drop-down menu.

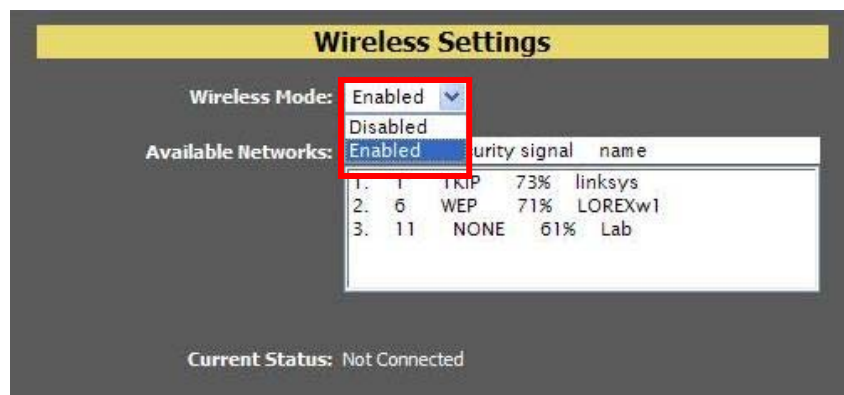


Figure 6.0 Enable a wireless connection

3. From the list of available networks, select the wireless network for the device. If protection/encryption is enabled on the wireless router, you must enter the network password.

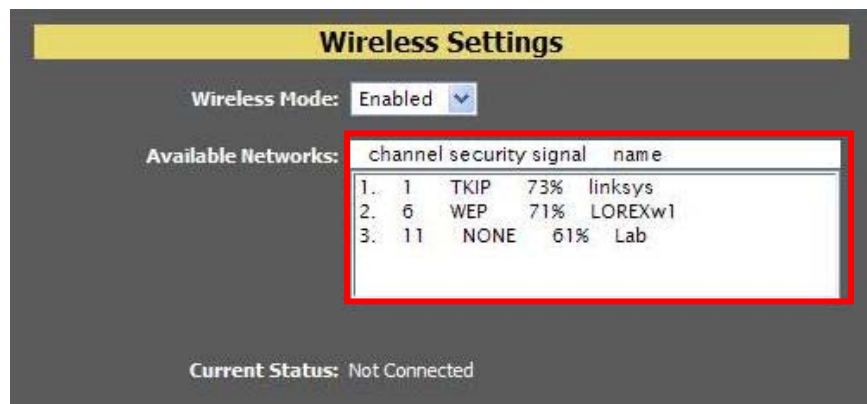


Figure 6.1 Select your wireless network (enter password if necessary)

4. Click **Connect**. Allow DigiViewer a few moments to apply your new connection settings.

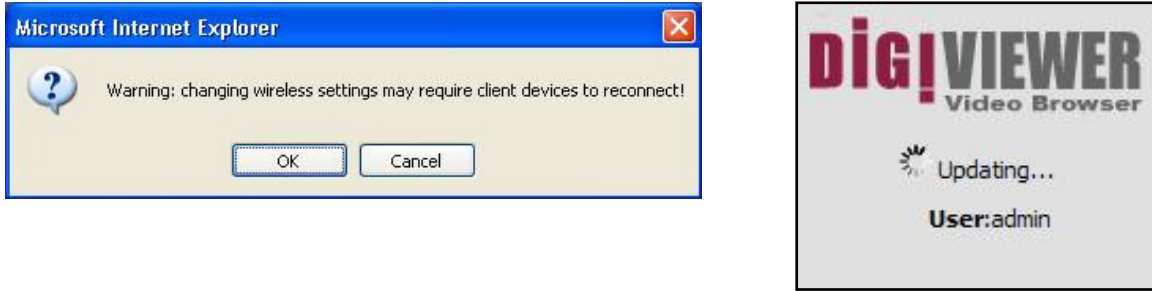


Figure 6.2 Your device may need to reconnect with new wireless settings

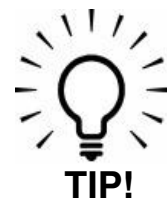
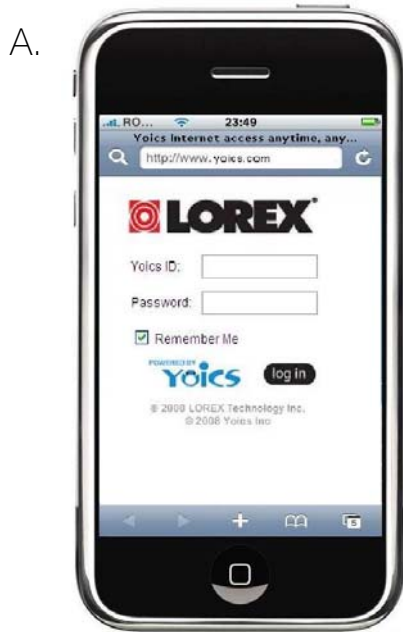
Note: Changing wireless settings may require devices to reconnect.

5. Close the browser window.
6. Return to DigiConsole. From the Find menu, right-click on your camera and select **Refresh the list of devices** (If DigiConsole was closed earlier, run the software again and click **Find**).
7. Disconnect the network cable from the camera.
8. Double-click the camera to launch DigiViewer in your default browser.

Remote Viewing from iPhone™ or iPod touch™

To access your device remotely from iPhone™ or iPod touch™:

1. Using Safari, go to www.yoics.com and login using your Yoics **username** and **password**.
2. Click the name of the device you want to view.
3. Enter your **username** and **password** (by default, admin) to login to the camera.



TIP!

With the latest version of iPhone and iPod touch, you can bookmark the Yoics website for quick access. You can also create a shortcut on the Applications screen for even faster access.

Figure 7.0 Remote viewing using iPhone™ or iPod touch™

Additional Information

For details on camera maintenance and firmware updates, please refer to the *DigiConsole & DigiViewer Software Manual* included on the CD bundled with this package.

Focusing the camera

You can manually adjust the focus of the LNE3003 Remote Surveillance Camera.

Note: Make sure the camera is powered on and connected to a network before attempting to adjust the focus.

To adjust the focus:

1. Open DigiViewer in your default browser.

Note: You can open DigiViewer from DigiConsole or directly in your browser using your camera's IP address.

2. Using DigiViewer as a monitor, turn the silver ring at the lens of the camera back and forth until image is sharp.



Figure 8.0 Turn the ring back and forth to adjust the focus

Appendix 1: Camera Specifications

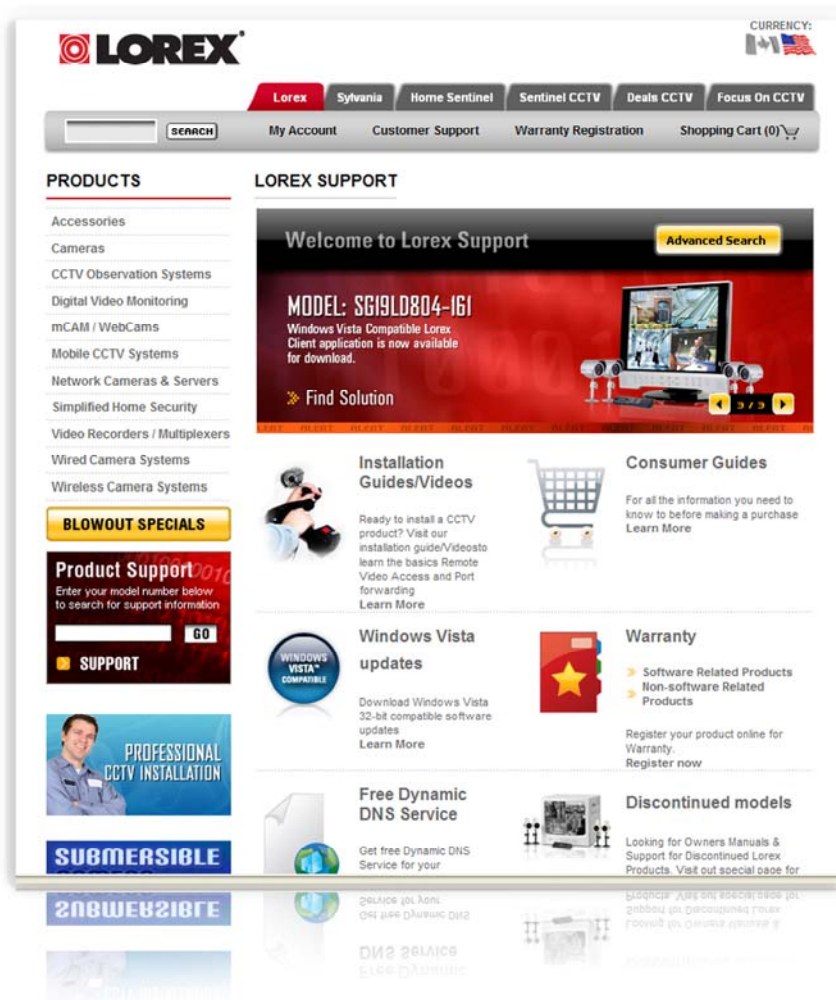
Models:	LNE3003
Image Sensor:	1/4" Progressive CMOS Sensor
Video Format:	VGA
Effective Pixels:	VGA: 640H x 480V(307K)
Scan System:	Progressive
Sync System:	Internal
S/N Ration	More than 50Db without AGC
Iris:	AES
Zoom:	10x Digital
Minimum Illumination:	0.5 LUX without LEDs, 0 LUX with Night Vision LED
Lens/Focal Length/Type:	4.0 mm Fixed
Lens Mount Type:	Fixed
Aperture:	F2.0
FOV (Diagonal):	58 degree
IR LED/Qty/LED Type (nm)/ Night Vision Range:	white LED / 6 pieces / 5m / 17 Ft
Unit Weight:	0.12 kg/0.26 Lbs
Unit Dimensions:	4.1" / 104mm X 2.5"/63mm X 1.4"/35mm (W X D X H)
Video Compression:	Motion JPEG & MPEG-4
Max Resolution:	640 x 480(VGA)
Frame Rate:	Motion JPEG: Up to 30 fps in all resolutions MPEG-4: Up to 30 fps in all resolutions
Video Streaming:	RTSP MPEG-4, HTTP Motion JPEG and MPEG-4 Controllable frame rate and bandwidth 3GPP/ISMA RTSP compatible
Audio:	Two-way (full duplex) Built-in microphone
Alarm and Event Management:	Built-in motion detection triggers e-mail notification with picture attached Image upload via FTP
Connectors:	Ethernet RJ-45, audio line out, Power
Processors and Memory:	ARM9 based 32-bit RISC CPU 32MB RAM, 4MB Flash
Operation System:	Linux 2.4

Appendix 1: Camera Specifications (cont'd.)

Power:	5V DC,max 4.5 W
Operating Conditions:	0-45 °C (32-113 °F) Humidity 20-80% RH (non-condensing)
Browser Support:	Internet Explorer, Firefox, Opera, Safari
PC Desktop Application Support:	Windows XP, Windows Vista
Remote Viewing Support:	Yoics (Easy Connect) , MSN, DDNS
Mobile Support:	3GPP, Wi-Fi (iPhone™ / iPod touch™, supported 3GPP Mobile Phone)
Supported Protocols:	TCP/IP, DHCP, ARP, ICMP, FTP, SMTP, DNS, NTP, UPnP,RTSP, RTP, HTTP, TCP, UDP, 3GPP/ ISMA RTSP
Video Surveillance Software:	PC based surveillance application for viewing, recording and archiving up to 6 cameras
Approvals:	CE,FCC,RoHS
Dimensions:	104 x 63 x 35mm

It's all on the Web!

-  **Product Information**
-  **Specification Sheets**
-  **User Manuals**
-  **Software Upgrades**
-  **Quick Start Guides**
-  **Firmware Upgrades**



VISIT
www.lorexcctv.com



www.lorexcctv.com