



Quick Start Guide

Before getting started...

- ☒ **Check if your BRAVIA's setup is complete.**
- ☒ **Check your BRAVIA's series name.**

See the next page for details on series names:

Setup procedure differs

depending on which BRAVIA you use:



Update is not required.

Follow the instructions on this Quick Start Guide.



Update your BRAVIA before starting the setup.

Turn on your BRAVIA and find the settings menu as follows:

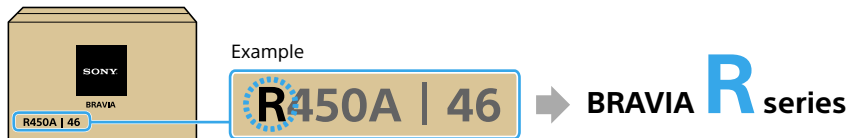
HOME → Settings → Product Support → Software Update

To update, follow the instruction on the screen and select "Update Now."

How do I check my BRAVIA's series name?

You can find the series name in your product's model name. Follow either of the methods below to find your model name.

On your BRAVIA packaging:



In your BRAVIA settings:

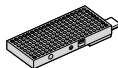
HOME → Settings → Product Support → Contact Sony



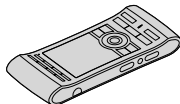
What you need

In the Box:

- ☐ Smart Stick (1)



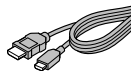
- ☐ Remote control (1)



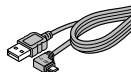
- ☐ Size AA batteries (2)



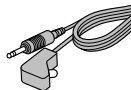
- ☐ Micro HDMI cable (1)
(if you use Cable/Satellite Box)



- ☐ Micro USB cable (1)

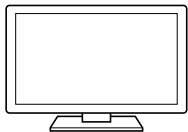


- ☐ IR (Infrared) Blaster cable (1)



You will also need:

- ☐ BRAVIA R, S, W or X series



- ☐ Wireless Network
- ☐ Wireless network name ("SSID") and Password

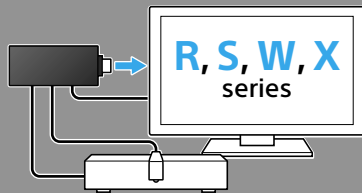
- ☐ Cable/Satellite Box (if you use one)



Connection

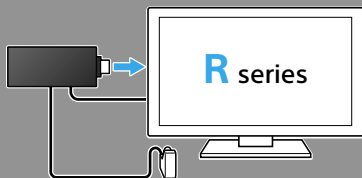
How do you watch TV?

I use my Cable/Satellite
Box and BRAVIA



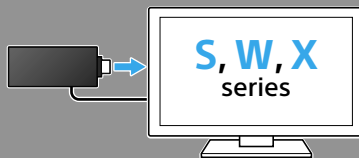
start from **page 8 (1)**

I use my BRAVIA R series
by itself



start from **page 9 (2)**

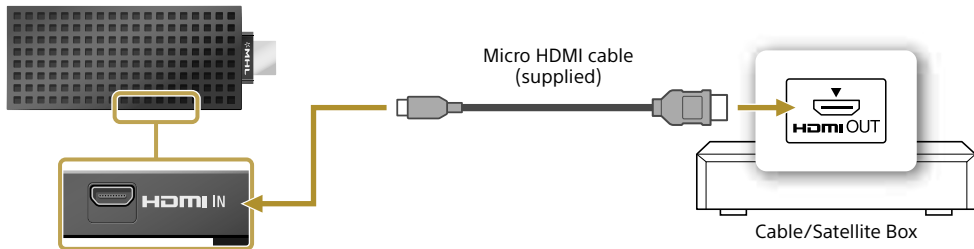
I use my BRAVIA S, W or X
series by itself



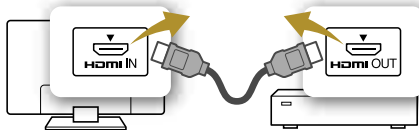
start from **page 10 (3)**

1

Connect the Smart Stick and the Cable/Satellite Box using the Micro HDMI cable.

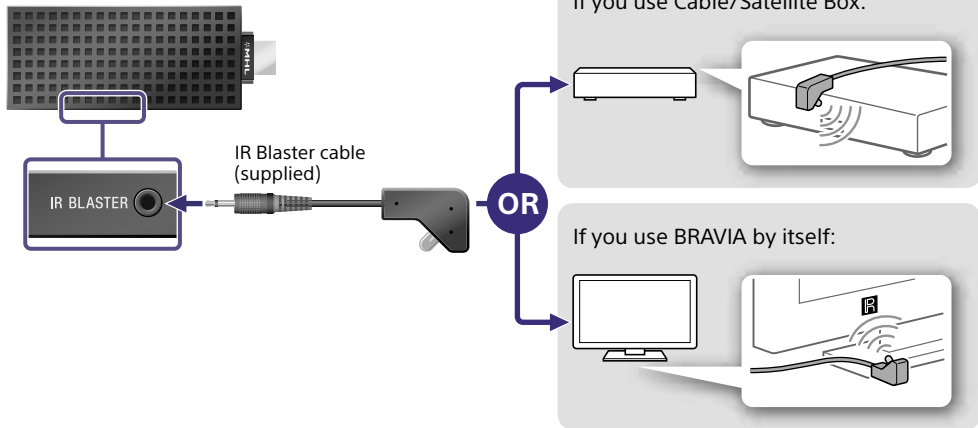
**TIPS**

If your BRAVIA and Cable/Satellite Box are already connected by an HDMI cable, remove it in advance.

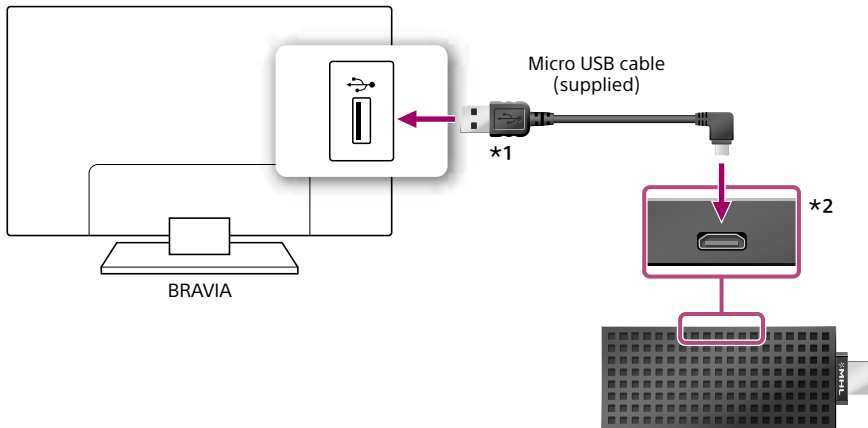


2

Connect the IR Blaster cable to the Smart Stick.
Place the other end near to the Cable/Satellite Box or your BRAVIA as illustrated below.



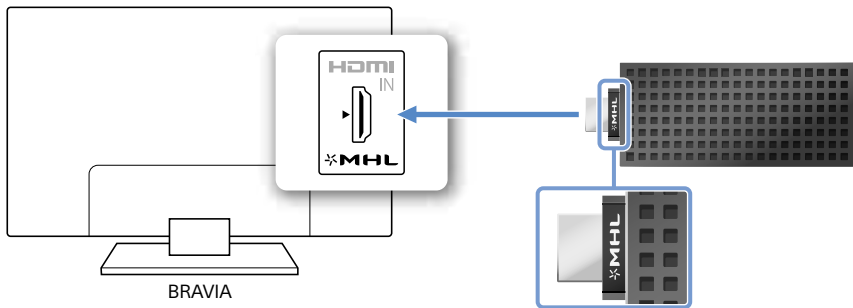
Connect the Smart Stick and your BRAVIA using the Micro USB cable to supply power to the Smart Stick.



*1 Do not connect this plug to devices other than the BRAVIA.

*2 This jack is for power supply from BRAVIA.

Finally, connect the Smart Stick directly to your BRAVIA.



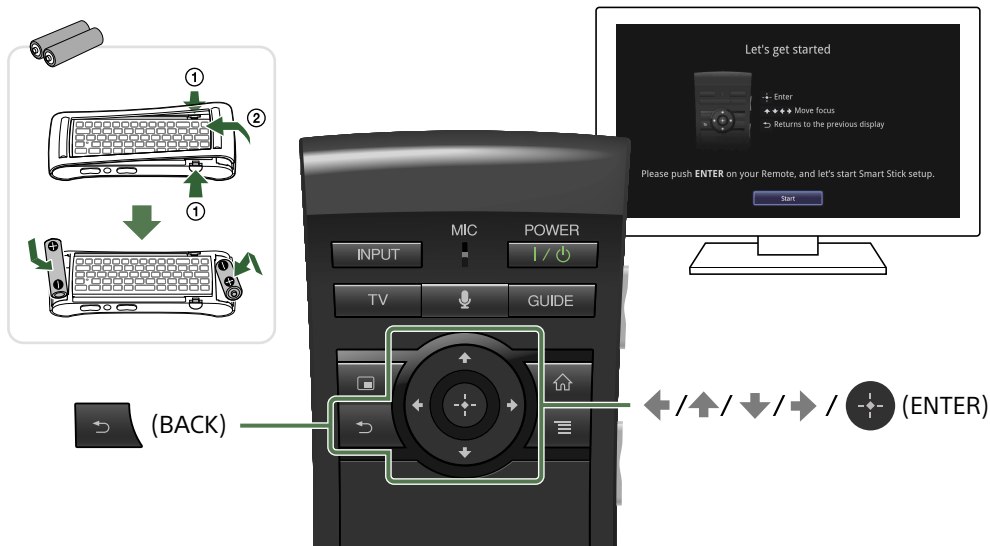
Do not connect the Smart Stick to any jacks other than the jack labeled *MHL.



5

Turn on your BRAVIA and follow the on-screen Initial Setup Wizard to get the system ready for use.

If the setup screen is not displayed, change the TV input to "MHL."



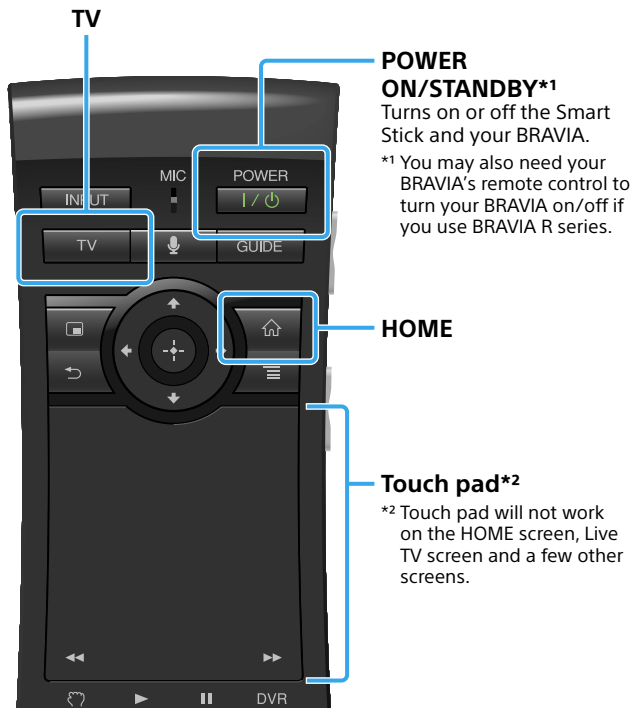
Congratulations! You have now finished the setup.



Following pages...

About your remote control.....p14
Learn more about the Smart
Stick/Troubleshootingp16

About your remote control





HOME

Access each feature of the HOME screen.



TV

Watch TV broadcasts.

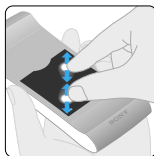
Touch pad



Click



Scroll vertically &
horizontally



Zoom in/out

Explore the online Help Guide for more finger gestures/details on how to use your remote control (see page 16).

Learn more about the Smart Stick/ Troubleshooting

The online Help Guide gives you complete guide on how to use the Smart Stick.

Accessing the Help Guide from the Smart Stick



Accessing the Help Guide from your PC/mobile

http://rd1.sony.net/help/nsz/gu1/h_u/

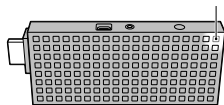



Troubleshooting

There is no picture (screen is dark).

- Make sure that the Smart Stick is securely connected to the MHL jack.
- Make sure that the supplied USB cable is securely connected to the Smart Stick and your BRAVIA.
- Make sure that all the connecting cables are securely connected. (Especially, make sure HDMI IN is correctly connected.)
- Change the input of the TV to display the signal from the MHL jack of the Smart Stick.
- Make sure that the power indicator is lit up white as illustrated below.

Power indicator



- Connect a Cable/Satellite Box to the HDMI IN jack. (When you press TV, GUIDE, or DVR on the remote control, the image from the device connected to the HDMI IN jack will appear on the TV screen.) Press  (HOME) on the remote control, and

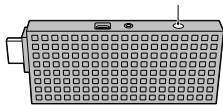
then select any application other than Live TV to return to the Smart Stick screen.

- Try the following:
 - Disconnect the Smart Stick from the TV and reconnect it securely to the MHL jack.
 - Turn the connected device off and on again.
 - Disconnect and reconnect the Micro HDMI cable.

The remote control does not function.

- Make sure that the batteries are inserted correctly into the remote control. If the remote control still does not function, re-pair the remote control with the Smart Stick by following the procedure below.
 - ① Press shortly the CONNECT button, located on the side of the Smart Stick.
 - ② Follow the instructions on the screen.

CONNECT button



Troubleshooting

The Smart Stick cannot connect to the Internet.

- Make sure that the Wireless LAN router is on.
- Check the settings of the Wireless LAN router. For details, refer to the operating instructions supplied with the Wireless LAN router.
- Move the Smart Stick and the Wireless LAN router closer to each other. The Wireless LAN connection is affected by the surrounding environment (the wall material, radio wave receiving condition, obstacles between the Smart Stick and the Wireless LAN router, etc.).
- Move the Smart Stick away from devices that use a 2.4 GHz frequency band (microwaves, Bluetooth devices, cordless digital devices, etc.), or turn off such devices. These devices may interrupt the communication between the Smart Stick and the Wireless LAN router.
- If you need MAC address in the Initial Setup Wizard, please select "Explain step" on "Connect to the Internet" screen.

The remote control cannot be used to control connected devices.

- Make sure that the IR Blaster cable is securely connected to the Smart Stick.
- Adjust the location of the IR Blaster near the connected device while checking the remote control to see if it works.

The picture from the Cable/Satellite Box is not output correctly.




- Make sure that the Micro HDMI cable is securely connected to the Smart Stick and the Cable/Satellite Box.
- Turn the Cable/Satellite Box off, then turn it on again.

The LED on the remote control is flashing.

- The remote control is being paired. Perform pairing according to the instructions on the screen.

- The LED on the remote control continues to flash after pairing is complete because the remote control is connecting with the Smart Stick. This is not a malfunction. The LED on the remote control flashes faster when it starts connecting with the Smart Stick.

The Smart Stick does not work, or you want to reboot the Smart Stick.

- Press  (Control),  (Shift) and  (Backspace) at the same time on the keyboard of the remote control to reboot the Smart Stick. If the Smart Stick still does not work, disconnect the Smart Stick from the TV and reconnect it securely to the MHL jack. This does not initialize the Smart Stick settings or other such settings.

© 2013 Sony Corporation
Printed in China
4-471-308-11(1)



**See the Help Guide for
complete instructions**

http://rd1.sony.net/help/nsz/gu1/h_u/



Sony Customer Support
<http://esupport.sony.com/> | 1-800-222-SONY
Please Call Before Returning the Product to the Store

Screen images, operations, and specifications
are subject to change without notice.