



◦ ◦ ◦ **ZVOX** Z-Base™ 575 ◦ ◦ ◦
Single-Cabinet Surround Sound System

O W N E R ' S M A N U A L

Don't Worry—This Is Going To Be Simple



zvox®

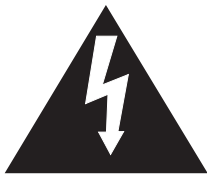
Great Sound Made Simple

READ THIS FIRST

Important Safety Instructions For ZVOX 575 System

WARNING

- TO PREVENT FIRE OR SHOCK HAZARD, DO NOT EXPOSE THIS APPLIANCE TO RAIN OR MOISTURE.
- THIS APPLIANCE SHALL NOT BE EXPOSED TO DRIPPING OR SPLASHING WATER AND NO OBJECT FILLED WITH LIQUIDS SUCH AS VASES SHALL BE PLACED ON APPARATUS.



This lightning flash with arrowhead symbol, within an equilateral triangle, is intended to alert the user to the presence of uninsulated "dangerous voltage" within the product's enclosure that may be sufficient magnitude to constitute a risk of electrical shock to persons.

CAUTION

RISK OF ELECTRICAL SHOCK,
DO NOT OPEN

Warning: To reduce the risk of electrical shock, do not remove cover (or back) no serviceable parts inside. Refer servicing to qualified service personnel.



The exclamation point within an equilateral triangle is intended to alert the user to the presence of important operating and maintenance (servicing) instructions in the literature accompanying the appliance.

Important Safety Instructions

1. Read these instructions.
2. Keep these instructions.
3. Heed all warnings.
4. Follow all instructions.
5. Do not use this apparatus near water.
6. Clean only with dry cloth.
7. Do not block any ventilation openings. Install in accordance with the manufacturer's instructions.
8. Do not install near any heat sources such as radiators, heat registers, stoves, or other apparatus (including amplifiers) that produce heat.
9. Do not defeat the safety purpose of the polarized or grounding-type plug. A polarized plug has two blades with one wider than the other. A grounding type plug has two blades and a third grounding prong. The wide blade or the third prong are provided for your safety. If the provided plug does not fit into your outlet, consult an electrician for replacement of the obsolete outlet.
10. Protect the power cord from being walked on or pinched particularly at plugs, convenience receptacles, and the point where they exit from the apparatus.
11. Only use attachments/accessories specified by the manufacturer.
12. Use only with the cart, stand, tripod, bracket, or table specified by the manufacturer, or sold with the apparatus. When a cart is used, use caution when moving the cart/apparatus combination to avoid injury from tip-over.
13. Unplug this apparatus during lightning storms or when unused for long periods of time.
14. Refer all servicing to qualified service personnel. Servicing is required when the apparatus has been damaged in any way, such as power-supply cord or plug is damaged, liquid has been spilled or objects have fallen into the apparatus, the apparatus has been exposed to rain or moisture, does not operate normally, or has been dropped.
15. **Grounding or Polarization**—This product may be equipped with a polarized alternating-current line plug (a plug having one blade wider than the other). This plug will fit into the power outlet only one way. This is a safety feature. If you are unable to insert the plug fully into the outlet, try reversing the plug. If the plug should still fail to fit, contact your electrician to replace your obsolete outlet. Do not defeat the safety purpose of the polarized plug.
Alternate Warnings—This product is equipped with a three-wire grounding-type plug, a plug having a third (grounding) pin. This plug will only fit into a grounding-type power outlet. This is a safety feature. If you are unable to insert the plug into the outlet, contact your electrician to replace your obsolete outlet. Do not defeat the safety purpose of the grounding-type plug.
16. **Ventilation**—Slots and openings in the cabinet are provided for ventilation and to ensure reliable operation of the product and to protect it from overheating, and these openings must not be blocked or covered. The openings should never be blocked by placing the product on a bed, sofa, rug, or other similar surface. This product should not be placed in a built-in installation such as a bookcase or rack unless proper ventilation is provided or the manufacturer's instructions have been adhered to.
17. The MAINS plug or an appliance coupler is used as the disconnect device, the disconnect device shall remain readily operable.
18. CLASS II apparatus with double insulation, and no protective earth provided.



Special Safety Warnings Regarding Placement of ZVOX 575 and Other Equipment



Stable Placement. Do not place the ZVOX 575 on an unstable cart, stand, bracket or table. The ZVOX 575 may fall, causing serious injury to a child or adult and serious damage to the product. Do not use the ZVOX 575 on any unstable surface.

Placement of a TV on the ZVOX 575. Televisions weighing less than 140 pounds, and with base dimensions of less than 34" in width and less than 15" in depth, can be placed on top of the ZVOX 575—BUT ONLY WHEN THE FOLLOWING SAFETY PRECAUTIONS ARE STRICTLY OBSERVED. PLACING A TV ON TOP OF THE ZVOX 575 WITHOUT FOLLOWING ALL THE PRECAUTIONS IS DANGEROUS AND SHOULD NOT BE DONE.

- The television must weigh 140 pounds or less.
- The base of the TV, or the TV stand, must be 34" wide or less.
- The base of the TV, or the TV stand, must be 15" deep or less.
- The TV MUST be anchored to the rear wall using anchor bolts and supporting cables supplied by the TV manufacturer, following the installation guidelines provided by the TV manufacturer.
- Be sure to take measures to prevent the ZVOX 575 from becoming uneven or unstable. Install the ZVOX 575 on a solid and flat surface.

Installation and Operating Instructions: ZVOX 575 Single-Cabinet Surround Sound System

Contents

ZVOX Audio ZVOX 575 cabinet
AC power cord
Remote Control and Battery
Main Audio Cable (left and right RCA type plugs on each end)
Aux Audio Cable (stereo miniplug at one end, left and right RCA type plugs on the other end)

Placement

Place the ZVOX 575 cabinet on a sturdy surface.
The ZVOX 575 cabinet should face the listening area.

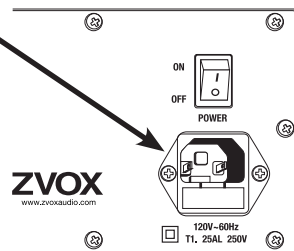
Power Connection

- 1 Connect the AC power cord to the 120V~60Hz Power Connector on the back of the ZVOX 575 cabinet.



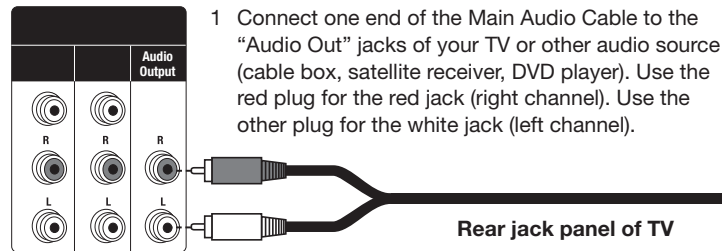
WARNING: DON'T PLUG AC CORD INTO OUTLET BEFORE IT IS CONNECTED TO THE POWER CONNECTOR ON THE REAR OF THE UNIT.

- 2 After you have confirmed the AC power cord is properly connected to ZVOX 575, connect the AC power cord plug into a convenient AC receptacle.
- 3 After you have made the necessary audio signal connections (see below), set the POWER switch on the back of the ZVOX 575 to ON.



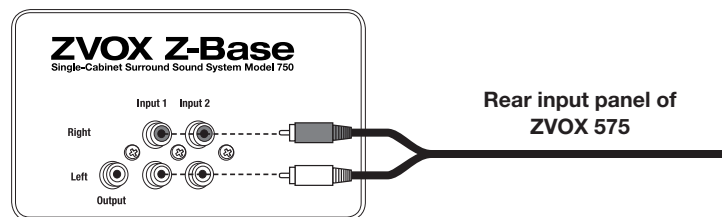
Rear AC panel of ZVOX 575

Audio Signal Connection



- 1 Connect one end of the Main Audio Cable to the "Audio Out" jacks of your TV or other audio source (cable box, satellite receiver, DVD player). Use the red plug for the red jack (right channel). Use the other plug for the white jack (left channel).

- 2 Connect the plugs on the other end of the Audio Cable in the same manner to the red and white INPUT 1 jacks on the back of the ZVOX 575 cabinet.



Rear input panel of
ZVOX 575

Turn Off Your TV's Internal Speakers

- 1 Push the MENU button on the TV's remote control and navigate to the AUDIO setting options.
- 2 Choose SPEAKER: OFF (the wording may vary).
- 3 If available, set AUDIO OUT to VARIABLE (the wording may vary). This is sometimes labeled AOV. Some TVs do not provide this option. In this case, the TV's audio output will either be FIXED or VARIABLE.

NOTE: VARIABLE AUDIO OUTPUT ON YOUR TV ALLOWS YOU TO CONTINUE TO USE YOUR TV'S REMOTE CONTROL TO ADJUST THE LISTENING VOLUME. IF YOUR TV'S AUDIO OUTPUT IS FIXED, THEN YOU USE THE ZVOX 575 REMOTE CONTROL TO ADJUST AUDIO OUTPUT.

NOTE: A UNIVERSAL OR PROGRAMMABLE/LEARNING REMOTE CAN BE SUBSTITUTED TO CONTROL THE ZVOX 575, YOUR TV AND OTHER CONNECTED DEVICES. THE ZVOX 575 WILL RESPOND TO THE FOLLOWING PREPROGRAMMED AUDIO REMOTE CODES: CANDLE 1004/HISENSE 1237/AIWA 1036.

ZVOX 575 Connectors

OUTPUT jack: The output of this jack is full-range monaural audio. Connect this jack to an external powered subwoofer, should one be available. If possible, set the subwoofer's crossover (sometimes labeled "Low Pass") to 50 to 60 Hz, then adjust the subwoofer's output to blend well with the ZVOX 575.

INPUT 1 jacks: Use to connect a TV, PC or other audio source

INPUT 2 jacks: Use this input only after INPUT 1 has an audio source. Audio on this input mixes with the audio from INPUT 1.

Remote Control

1. Insert the AAA batteries in the ZVOX 575 remote control.
2. Turn on the ZVOX 575 by pushing the power button on the remote control. A blue LED light should come on.

NOTE: IN NORMAL OPERATION THE UNIT WILL GO INTO STANDBY MODE 2-3 MINUTES AFTER IT STOPS RECEIVING AN AUDIO SIGNAL (FOR EXAMPLE, WHEN YOU TURN OFF YOUR TV). THE FRONT PANEL LIGHT WILL TURN FROM BLUE TO GREEN IN STANDBY MODE. WHEN THE SIGNAL RETURNS (AFTER YOU TURN YOUR TV ON), THE LIGHT WILL TURN BLUE AGAIN. TO DEFEAT THIS "AUTOMATIC STANDBY" MODE, PRESS THE "AUTO ON/OFF" BUTTON ONCE (THE LIGHT WILL BLINK). TO RESTORE THE SETTING, PRESS THE BUTTON AGAIN.

3. Adjust volume with the Volume "+" and "-" buttons. Note that the blue LED light under the grille will flash with every push of a button. When you have reached maximum (or minimum) volume, the blue LED will stop blinking. The LED reacts this way for all settings—VOLUME, PHASECUE™, SUBWOOFER and TREBLE.
4. When "MUTE" button is pushed, and volume is muted, the blue LED will flash until volume is unmuted with a second push of the button.
5. PHASECUE buttons control the ZVOX virtual surround sound system. There are nine (9) levels of PHASECUE adjustment. When you turn up the PHASECUE control, the audio should sound wider or "bigger." In many cases you will hear sounds from places where there are no speakers. This effect is stronger with live music, live sporting events and well-recorded movies and TV programs. With many programs—especially news shows and sitcoms—PHASECUE will have little effect.

NOTE: IF YOU FIND THAT CROWD NOISES OR MOVIE SPECIAL EFFECTS ARE "DROWNING OUT" THE DIALOG, TRY TURNING DOWN THE PHASECUE CONTROL. THIS WILL PUT MORE FOCUS ON DIALOG CLARITY.

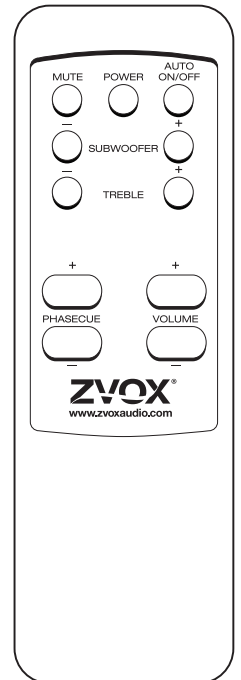
6. There are nine (9) levels of SUBWOOFER control. You may need to experiment with SUBWOOFER levels because speaker position and program material have a big effect on bass. If the audio sounds thin, try turning up the SUBWOOFER control. If the bass sounds overly loud, "boomy" or distorted, turn down the SUBWOOFER control.
7. There are nine (9) levels of TREBLE control. The adjustment this control makes is very subtle. Experiment until you think the sound is not too "bright" and not too "dull." Most people set the treble control once and leave the setting in that position.

Fine Tuning

If you hear a consistent hiss or hum from the ZVOX 575, it is likely you are using a variable audio signal output from your TV but ZVOX 575's volume is set too high. Lower the setting on the ZVOX 575 remote VOLUME by at least three steps or until the hiss is reduced, then set it aside. Use a higher volume setting on your TV remote from this point forward.

Please keep in mind that your ZVOX 575 is a highly accurate audio system. It may reveal noise, distortion or other flaws inherent in some audio programs that were masked with smaller TV speakers.

The PhaseCue control adjusts the size of the perceived "soundstage". Feel free to adjust it for different kinds of programs. In general, movies and live action video programming benefit from a higher setting than music concert programming. Remember, there are nine discrete steps of PhaseCue effect.





1-Year Limited Warranty

To the original purchaser, ZVOX Audio will warrant the ZVOX 575 system to be free of defects in material and workmanship for a period of one (1) year from date of purchase. With respect to defects, ZVOX will, at its option, replace the product or repair the defect in the product with no charge to the original purchaser for parts or labor. Customer is responsible for shipping charges where required.

This warranty does not extend to any defect, malfunction or failure caused by misuses, abuse, accident, faulty hookup, defective associated equipment or use of the system with equipment for which it is not intended.

This warranty is only valid when the system is returned to the retailer that sold the ZVOX 575 system to the original purchaser.

This is the sole and express warranty. This warranty is in lieu of all other warranties, expressed or implied, of merchantability, fitness for purpose or otherwise. In no event shall ZVOX Audio LLC be liable for incidental or consequential damages or have any liability with respect to defects other than the obligations set forth as stated. Except as provided herein, ZVOX Audio LLC shall have no liability or responsibility to the purchaser or any other person or entity with respect to any liability, loss or damage caused directly or indirectly by use of the product, including, but not limited to, any incidental or consequential damages.

To ensure warranty coverage, it is incumbent upon the original purchaser of the ZVOX 575 system to inform the retailer of the defect within the warranty period.

The only acceptable method of establishing warranty status is a copy of the original proof of purchase indicating customer's name and purchase date.

ZVOX®
Great Sound Made Simple

Questions? E-mail us at info@zvoxaudio.com

® ZVOX is a registered trademark of ZVOX Audio LLC and Phasecue and Z-Base are trademarks of ZVOX Audio LLC.

® RadioShack is a registered trademark of RadioShack Corporation.