

USER NOTICE

- ① Do not exceed the maximum specified load capacity (see specifications on the package label or visit www.indurogear.com).
- ① Always ensure that all Panhead locks are tightly engaged before mounting any gear.
- ① Do not use any Panhead below temperatures of -4°F or above +158°F (-20°C / +70°C).
- ① Always clean and dry any Panhead after it has been exposed to wet, dusty, sandy or salty conditions. Your Panhead is not recommended for use in salt water. If required, clean Panhead using a mild soap solution applied with a soft cloth, rinse with fresh water and dry with soft towel. Remove any dust, dirt or sand from all locks and all moving parts.
- ① Do not leave any Panhead in the sun for prolonged periods and avoid high temperature exposure.
- ① Avoid leaving any Tripod or Monopod unattended in areas where people could trip over the gear and get hurt.
- ① Remove camera, lens, and all gear from any Tripod or Monopod when transporting.
- ① For your safety, don't let your Induro gear come in contact with any electrical power source.

Specifications and design are subject to change without notice.

All tradenames, logos, and brand references are the respective trademarks of their owners.

INDURO™

INDURO Camera Support Gear

8 Westchester Plaza, Elmsford, NY 10523

T 914-347-3300

F 914-347-3309

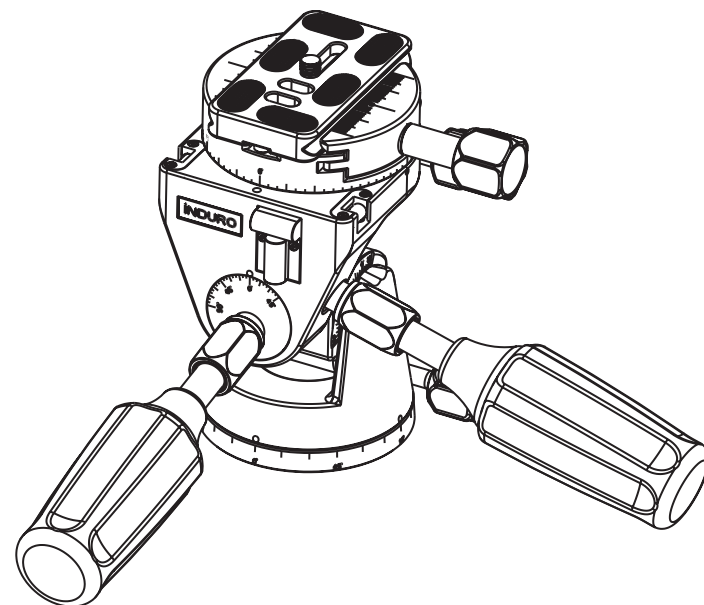
info@indurogear.com

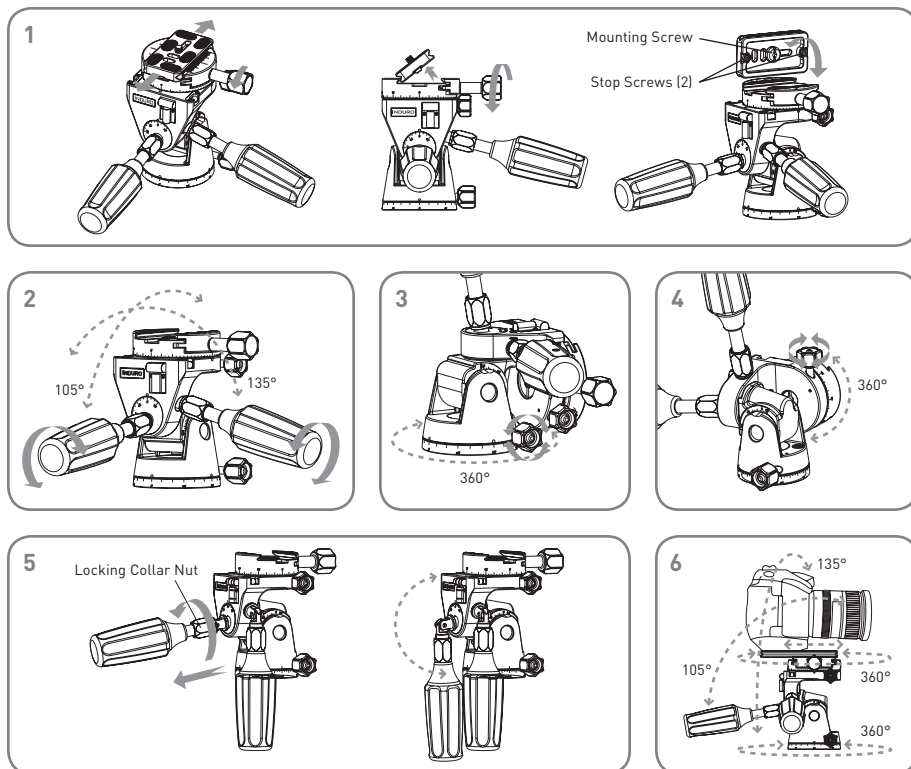
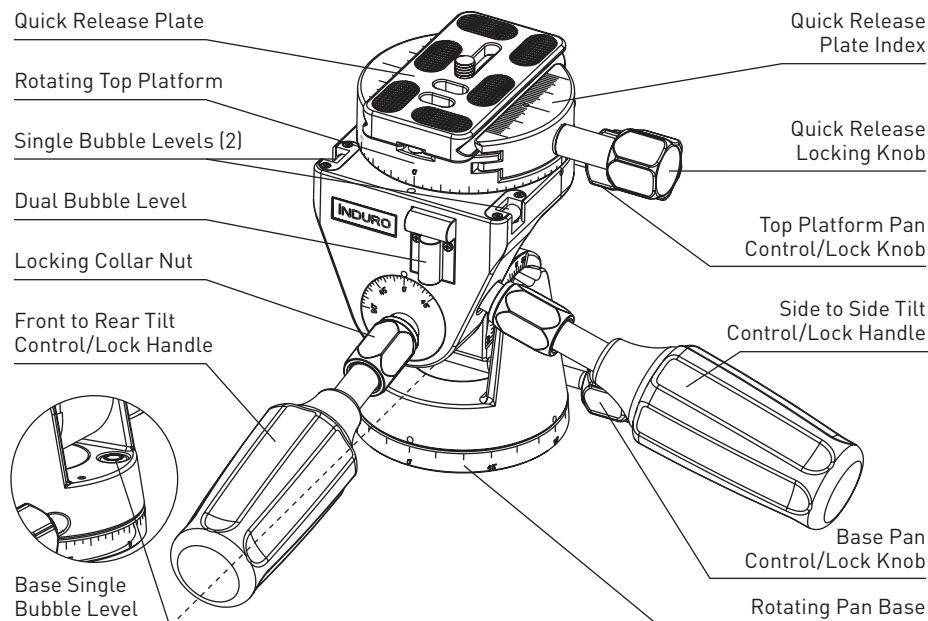
indurogear.com

INDURO™

PHQ-SERIES PANHEAD OPERATING INSTRUCTIONS

Thank you for making Induro your choice for professional photographic gear. Your Induro gear is manufactured to provide years of dependable service. In order to obtain optimum satisfaction and performance we suggest that you carefully read these instructions and provide them to anyone who may also use your Induro gear.





SETUP

Head Mounting

Install by screwing the head clockwise onto the 3/8" mounting thread of the top plate of the Tripod. Once it is hand tight, if available on the tripod, secure by fully tightening the Head Locking Screw(s) from below.

OPERATION

Five-way positioning of camera and lens movement is directly controllable on the PHQ Series Panheads. Two comfortable, foldable Handles provide both movement and locking of front to rear Tilt, and side to side Tilt. A separate Locking Knob permits the entire Head assembly to move freely within a 360° rotational adjustment on the Pan Base and another Locking Knob permits the Top Platform assembly to move freely within a 360° rotational adjustment on the tilted axis of the head. Additionally, the Quick Release plate can slide perpendicular to the rotational axis.

Universal Quick Release Plate System

The PHQ-Series Panheads feature an indexed Universal Arca-Swiss style Quick Release Plate system. It offers a quick method of mounting or releasing a Camera or Equipment from the Head. It's important that the correct Quick Release Plate be used along with the proper mounting screw (1/4-20 is included as the standard size but spare 1/4-20 and 3/8 plates of various lengths are available as accessories).

The Mounting Screw requires an Allen Key which is included (some screws also have a coin slot). Extra Plates are recommended as you can screw one to each Camera or Lens for even greater convenience when rapidly mounting and dismounting gear. And because of compatibility with the Universal Arca-Swiss style system, most plates and special brackets from other manufacturers can be used as well.

Quick Release Lock (FIGURE 1)

When used properly, and with a featured Quick Release Plate or Accessory, the Quick Release Lock offers two levels of security for your gear. To remove the Quick Release Plate, turn the Quick Release Locking Knob counter-clockwise. A partial opening of the clamping mechanism allows the Quick Release Plate to slide on the Mounting Platform for proper balance and positioning. Two removable Stop Screws on the bottom of a featured Quick Release Plate provide this first level of security. An additional counter-clockwise turn of the Quick Release Locking Knob opens the clamp fully so that the Quick Release Plate can be tilted out to be removed. Reverse the process and tighten the Quick Release Locking Knob to secure the Quick Release Plate.

NOTE: Always hold on firmly to balance the weight of the camera when making any movement adjustments.

Tilt Controls (FIGURE 2)

Front to Rear Angle or Tilt adjustments can be easily accomplished by first loosening the Front to Rear Tilt Control Handle (be sure to hold on firmly to balance weight of the camera). Position as required and then tighten Handle securely. The same Control and Lock are available on the other axis for Side to Side Angle or Tilt adjustments by using the Side to Side Tilt Control Handle. Bubble Levels can be viewed on all sides while making adjustments.

NOTE: Do not over tighten the Tilt Control Locks as this could damage the locking mechanism.

Base Pan Control (FIGURE 3)

Horizontal rotation or Panning can be easily accomplished by first loosening the Base Pan Lock Knob and then rotating the Head on the Pan Base. Once in position tighten the Base Pan Lock securely.

NOTE: Do not over tighten the Base Pan Lock as this could damage the locking mechanism.

Top Platform Pan Control (FIGURE 4)

Similar to the Base Pan Control the Top Platform Pan Control Knob allows rotation or Panning of the Top Platform at any axis of Panhead Tilt. To accomplish this first loosen the Top Platform Pan Lock Knob and then rotate the Top Platform. Once in position tighten the Top Platform Pan Lock securely.

NOTE: Do not over tighten the Top Platform Pan Lock as this could damage the locking mechanism.

Folding Tilt Control Handles (FIGURE 5)

Both Tilt Control Handles can easily fold down along the sides of the PHQ Head to make packing and transport much more convenient. To prepare for transport (without a camera mounted), firmly hold the Handle and rotate the Locking Collar Nut counter-clockwise until you can slide it back on the shaft exposing the joint and allowing it to bend. Reverse the procedure to secure the Handle for normal operation.

Quintaxial Camera Control (FIGURE 6)

A unique feature of the PHQ head is the exceptional level of calibrated adjustments, and control of camera and lens positioning on five axis of movement. This offers exceptional convenience for studio, architectural and nature photographers. And, when used in combination with longer plates and other specialized Arca-Swiss compatible Quick Release components (which allow for nodal point positioning), the capability extends to panoramic, QTVR and Spherical photography as well.