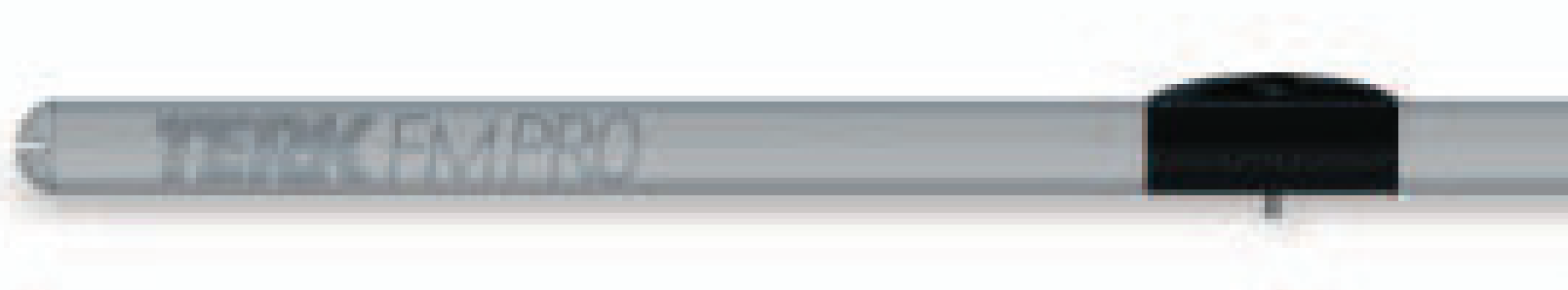


FM-50

OWNER'S MANUAL



FM Pro
Powered Indoor Antenna

TERK[®]

Important Safety Precautions

Use extreme caution when installing or removing an outdoor antenna close to overhead wires.

If the antenna starts to fall, let it go! If any part of the antenna makes contact with overhead power lines, touching the antenna or the antenna cable can cause electrocution and death. Call the power company to remove the antenna. Do not attempt to remove it yourself!

Installing Your FM Pro

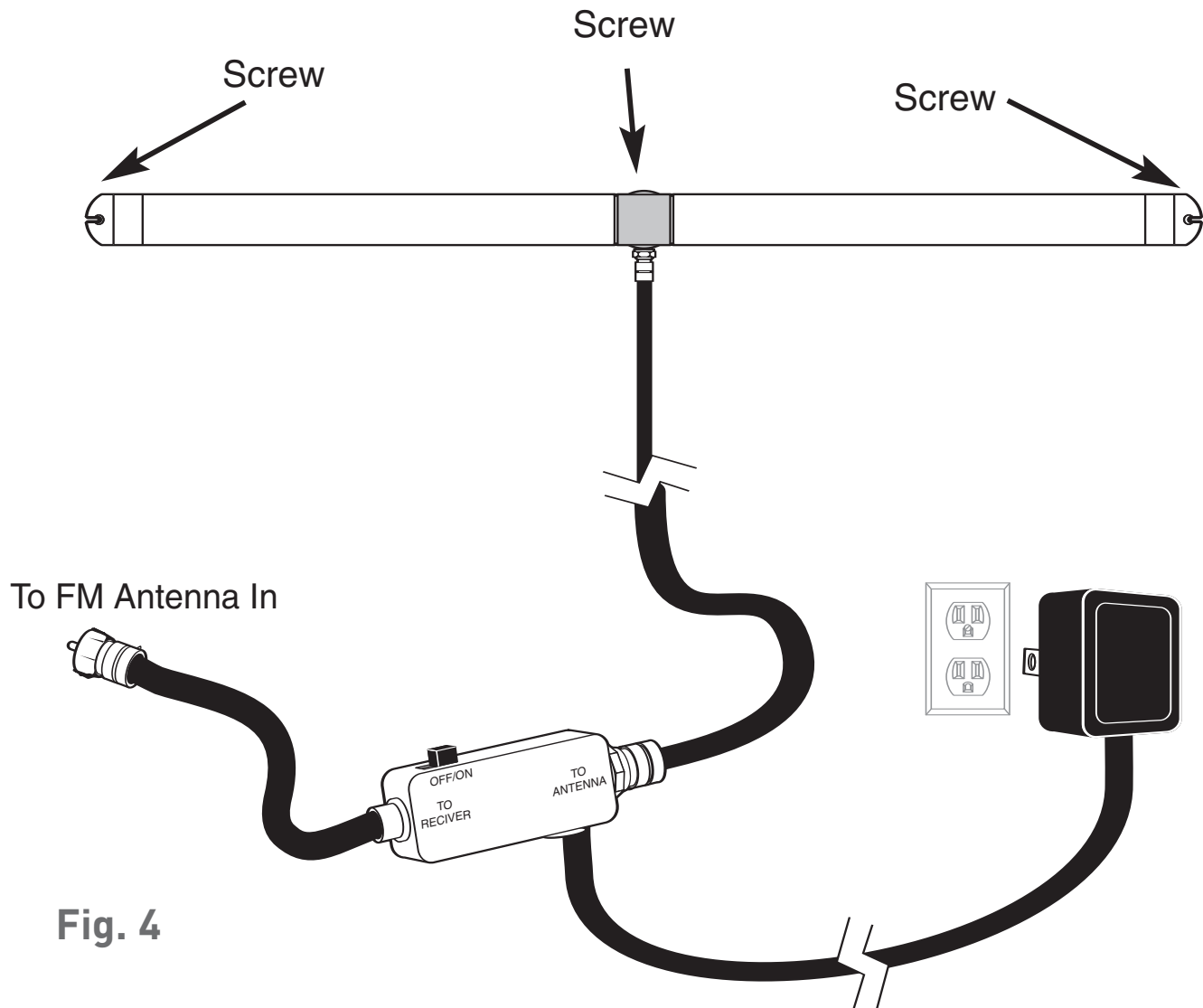


Fig. 4

When mounting the antenna outdoors or indoors, remember to install the FM Pro HORIZONTALLY, parallel to the ground. DO NOT INSTALL FM PRO VERTICALLY!

NOTE: The FM Pro may be painted to match the decor of your home. We recommend using a primer coat before applying your color coat. Do not use a lead-based paint.

Making Connections With Your New FM Pro

FM-50

Radio tuners and receivers can have different connections for your new FM Pro antenna. Please find the connection that best matches your tuner or receiver and follow the listed instructions.

Power Connection:

Your FM Pro uses a power injector to send power to the antenna through the antenna wire. This allows you to install the antenna without a power line. Follow the steps below to connect the power injector to your system.

See Fig. 4 on page 2.

1. Connect the antenna cable (not supplied) coming from the FM Pro to the power injector on the terminal labeled "TO ANTENNA"
2. Connect the short black cable on the power injector labeled "TO RECEIVER" to your radio tuner or receiver as listed in the FM Connections section located on Page 4.
3. Plug the attached power supply into any working electrical outlet.

3

FM Connections:

75 Ohm Coaxial

Your TERK antenna has a slip-on coaxial connector on the FM lead. Simply slide the connector onto the coaxial terminal. See Fig. 1.

75 Ohm Push-Button Connection

If your Radio tuner or receiver has push-button terminals for FM, you will need to use the supplied RED 75 Ohm matching transformer. First, slide the RED 75 Ohm matching transformer into the connector on the FM lead of the antenna. Next slide the RED wire into the terminal marked “FM 75 Ohm”. Lastly connect the BLACK wire into the terminal marked “FM Ground” or “GND”. See Fig. 2.

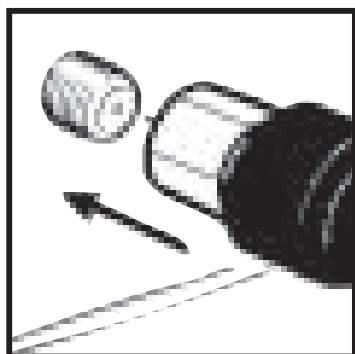


Fig. 1

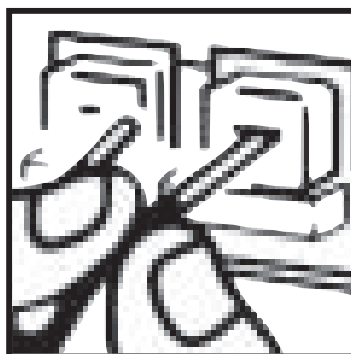


Fig. 2

Locating Your FM Pro For Best Results

1. All antennas are affected by electromagnetic fields. To maximize performance, position your FM Pro antenna away from direct contact with receivers, tuners, CD players, TVs and computers.

Note: Antennas work best when CD players, VCRs and computers are turned off.

2. Keep the antenna away from large metal objects. Mounting the FM Pro near a window, in the attic or outdoors (on the side of the home) as high off the ground as possible, often provides the best FM reception results. Never mount the FM Pro on aluminum siding or in an attic with foil-wrapped insulation. (These act as RF shields).
3. On occasions, certain areas in your home may be null points or dead spots where no radio signal can be received. This may also occur in metal-frame buildings and houses with aluminum siding. In this case, simply move your antenna, trying different locations, until the best reception is achieved. Try with the amplifier 'ON' then 'OFF', listening for the best signal.
4. In weak signal areas, optimum tuning is achieved with your receiver's scan button in the 'OFF' position.

Helpful Information About Your FM Pro

Remember that no antenna can receive a radio signal that isn't there. When a usable radio signal is present, your FM Pro will improve FM reception.

Note: Generally, a practical limit to radio reception is 40-50 miles from the broadcast transmitter depending on the terrain.

Gain Control Switch:

The gain control switch located on the supplied power injector is used to control the amplification of the antenna. Distant stations may need amplification.

See Fig. 3.

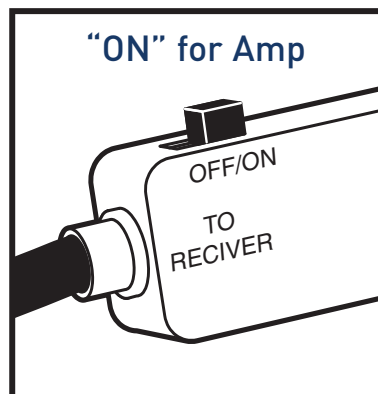


Fig. 3

Fig. 3

Limited Warranty

Audiovox Corporation (Audiovox) warrants this product against defects in materials or workmanship for one (1) year from the date of purchase. During this period, this product will be replaced without charge. This warranty does not cover any damage due to acts of nature, commercial use, accident, misuse, abuse or negligence. This warranty is only valid in the USA. Replacement as provided under this warranty is the exclusive remedy of the consumer.

Audiovox shall not be liable for any incidental or consequential damages for breach of any express or implied warranty on this product, except to the extent that limitations of this sort are prohibited by applicable law.

THERE ARE NO IMPLIED WARRANTIES OF MERCHANTABILITY OR FITNESS FOR A PARTICULAR PURCHASE EXCEPT TO THE EXTENT THAT IMPLIED WARRANTIES OR EITHER SORT ARE REQUIRED BY APPLICABLE LAW, AND IN SUCH CASE, EACH WARRANTY IS LIMITED IN DURATION TO THE ONE YEAR.

**For customer service and
technical information::1.800.290.6650**



For Customer Service
Visit Our Website At
www.audiovox.com
Product Information, Photos,
FAQ's, Owner's Manuals

TERK and the TERK logo are registered trademarks of AUDIOVOX Corp.